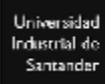

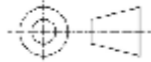
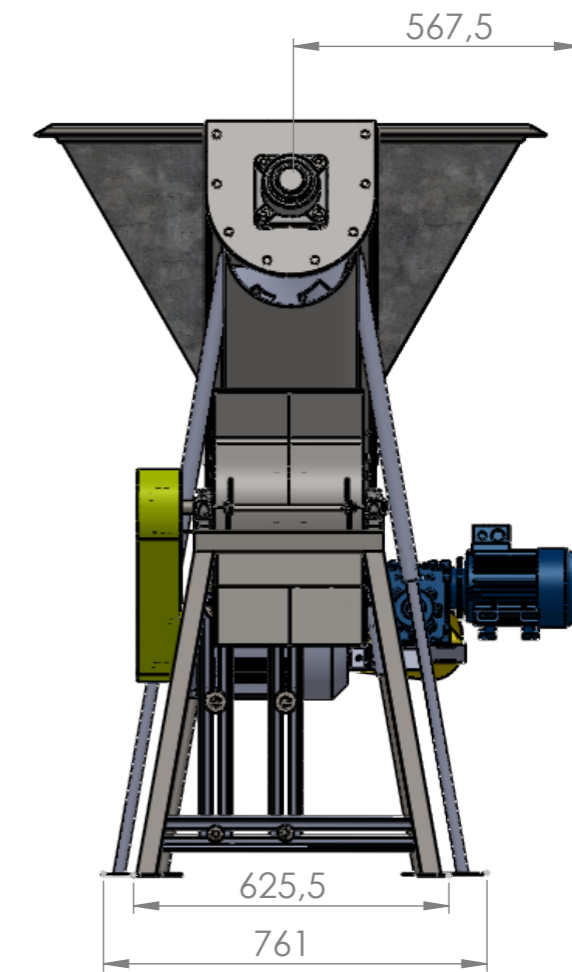
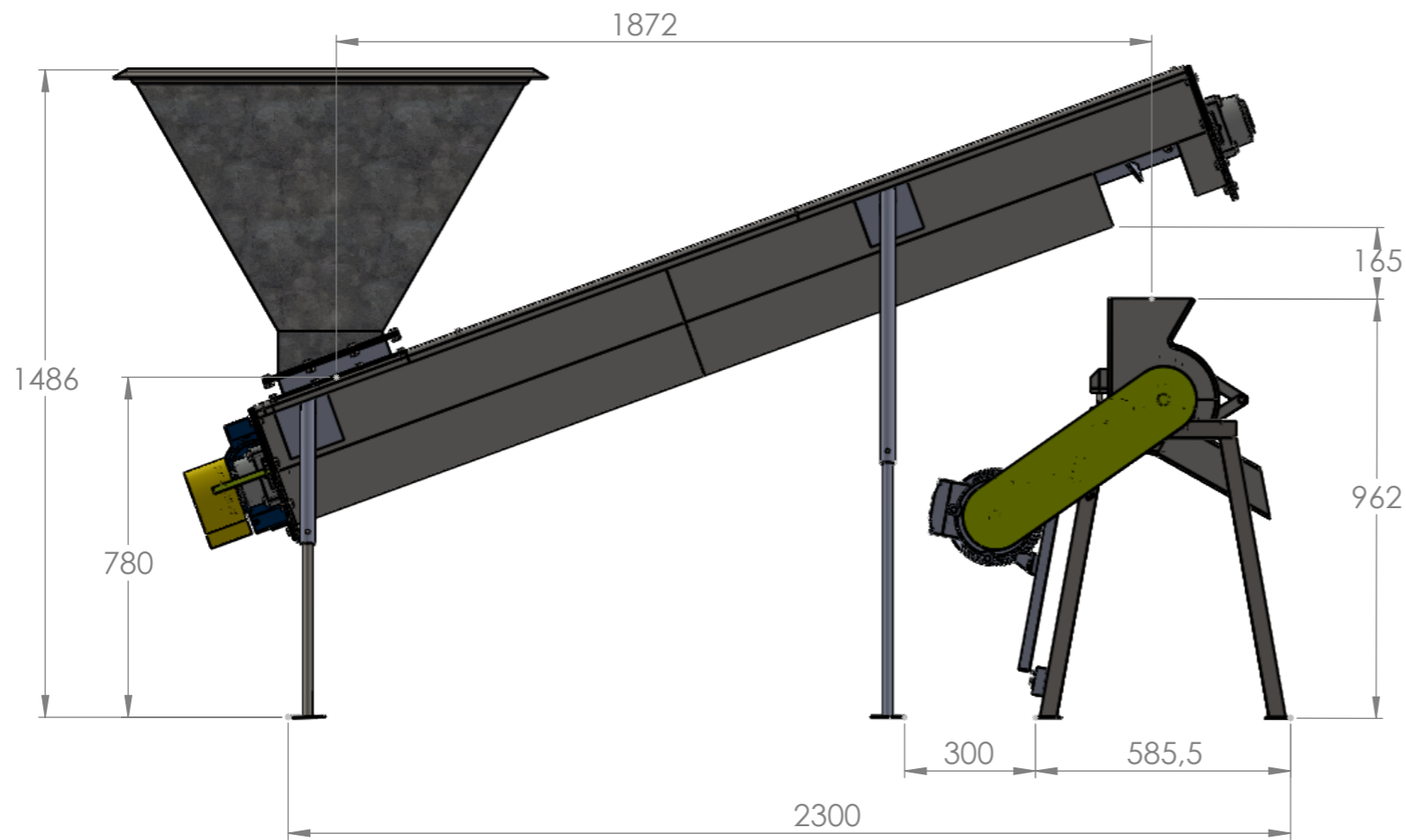
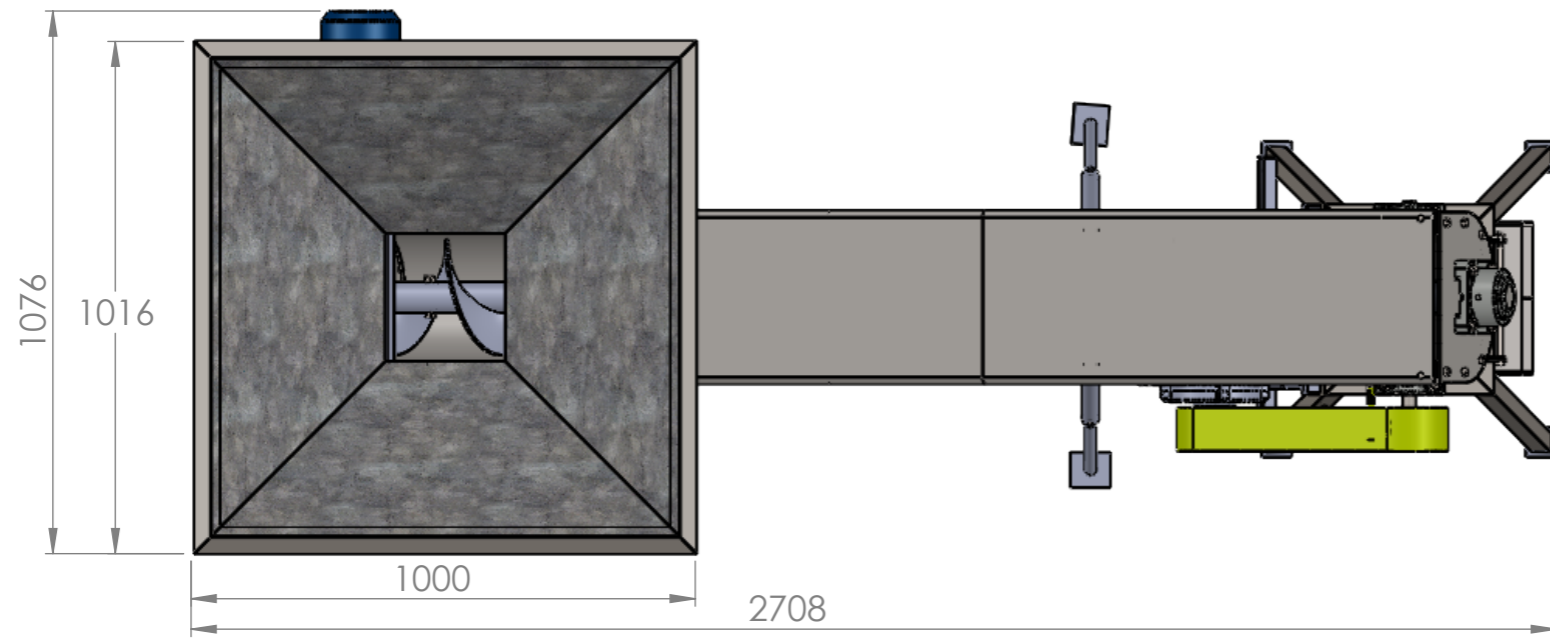
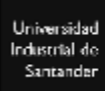

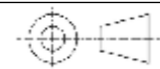
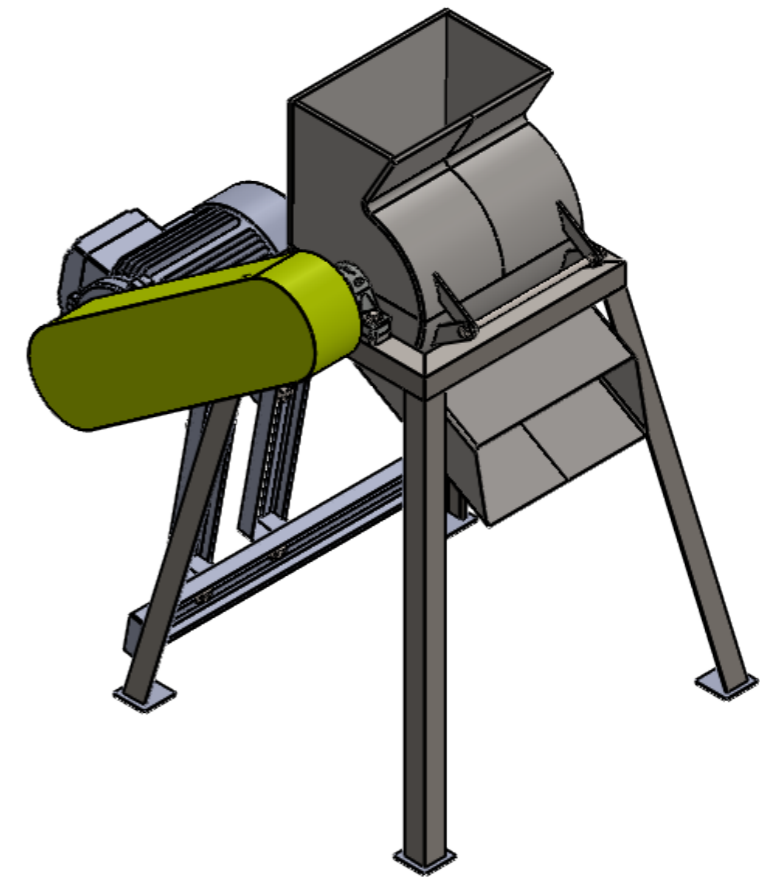
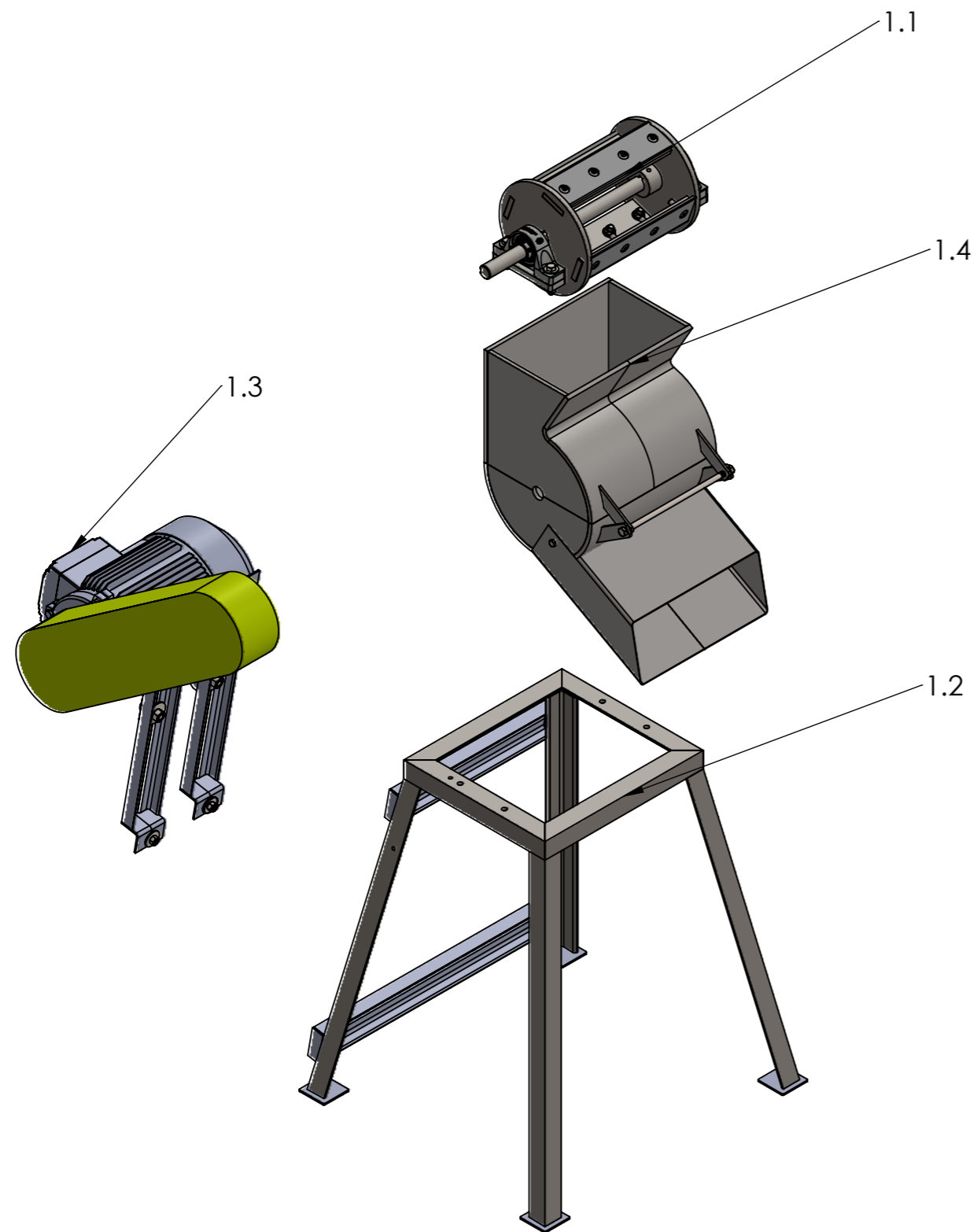
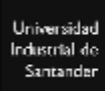

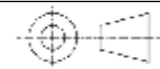


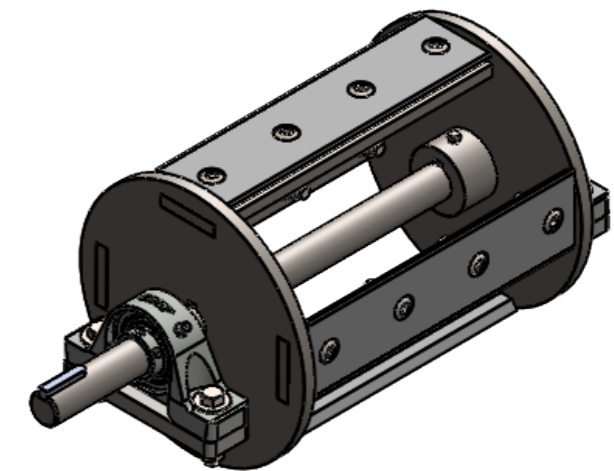
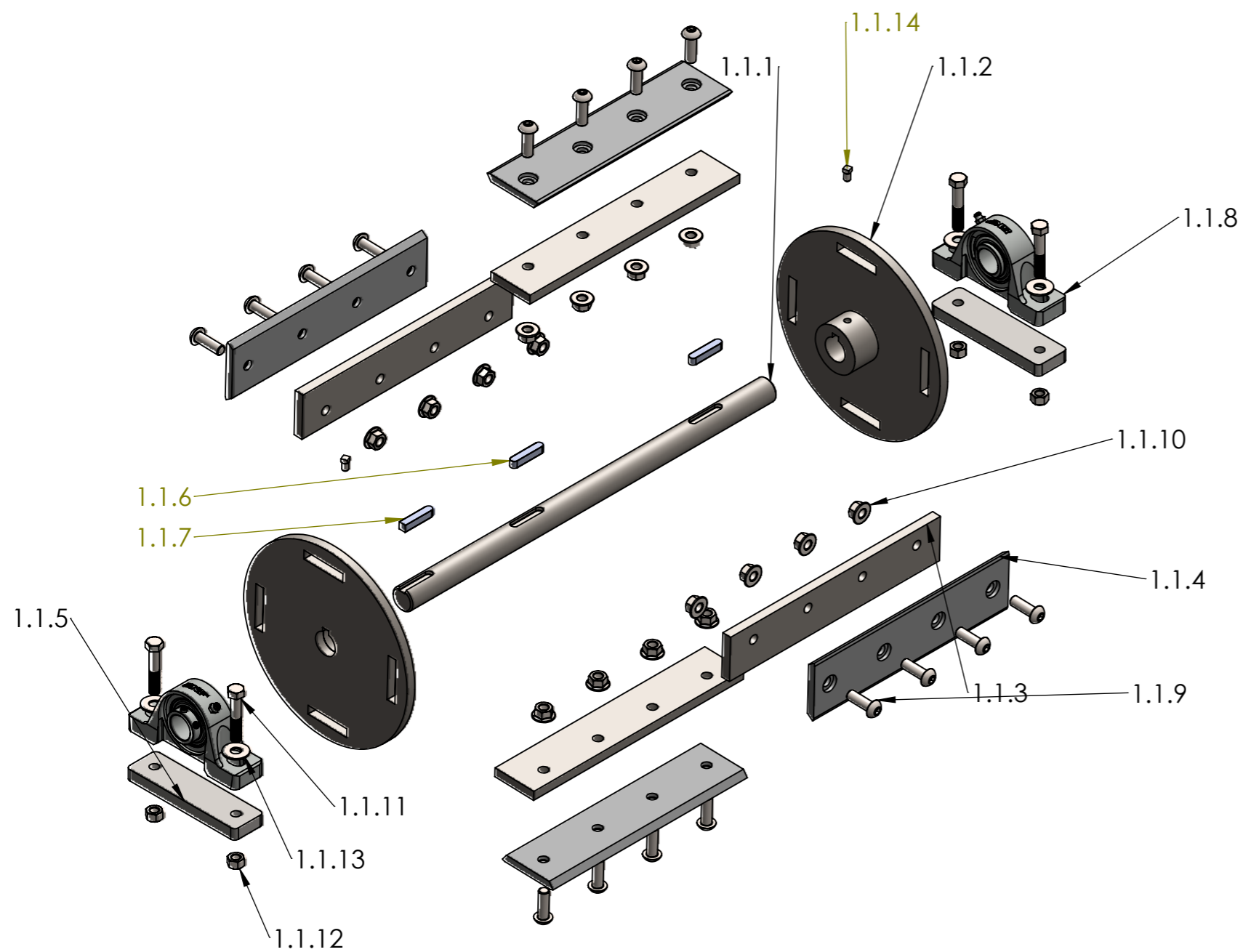
2	ALIMENTADOR HELICOIDAL	1
1	MOLINO	1
Nº	NOMBRE	CANT
 	ESCUELA DE INGENIERIA MECANICA	
ESCALA: 1:10	ALIMENTADOR HELICOIDAL Y MOLINO	
	DIBUJADO POR: NINY PINEDA Y FABIAN PINEDA	2024-08-16
FORMATO A3	REVISADO POR: ISNARDO GONZALEZ	HOJA 1/64
MEDIDAS EN: MILIMETROS	PL N° 01-00-00	



				<b>ESCUELA DE INGENIERIA MECANICA</b>	
<b>ESCALA:</b> 1:15	<b>ALIMENTADOR HELICOIDAL Y MOLINO</b>				
	<b>DIBUJADO POR:</b> NINY PINEDA Y FABIAN PINEDA	2024-08-16			
<b>FORMATO</b> A3	<b>REVISADO POR:</b> ISNARDO GONZALEZ		<b>HOJA</b> 2/64		
<b>MEDIDAS EN:</b> MILIMETROS					PL N° 01-00-00



1.4	CARCASA	1
1.3	MECANISMO DE POTENCIA	1
1.2	BASTIDOR	1
1.1	MECANISMO DE MOLIENDA	1
Nº	NOMBRE	CANT
 		ESCUELA DE INGENIERIA MECANICA
ESCALA: 1:10	MOLINO, EXPLOSIONADO	
	DIBUJADO POR: NINY PINEDA Y FABIAN PINEDA	2024-08-16
FORMATO A3	REVISADO POR: ISNARDO GONZALEZ	HOJA 3/64
MEDIDAS EN: MILIMETROS	PL N° 01-00-00	



1.1.14	Tornillo cabeza cuadrada SSCUPSQR 0.25 - 28x0.375	2	ACERO GRADO 8
1.1.13	REGULAR FW - 0.375	4	ACERO AISI 304
1.1.12	HNUT-0.375-24	4	ACERO AISI 304
1.1.11	HBOLT 0.375-24x2x1	4	ACERO AISI 304
1.1.10	HEX FLANGE NUT M10	16	ACERO GRADO 8
1.1.9	B18.3M - 10 x 1.5 x 30	16	ACERO GRADO 8
1.1.8	SKF_P2BL 100-WF	2	
1.1.7	Cuña polea	1	ACERO 1020
1.1.6	Cuña disco	2	ACERO 1020
1.1.5	Base chumacera	2	ACERO AISI 304
1.1.4	Cuchilla	4	ACERO ASTM A514
1.1.3	Porta cuchilla	4	ACERO 1045
1.1.2	Disco	2	ACERO 1045
1.1.1	Eje	1	ACERO 4140
N°	NOMBRE	CANT	

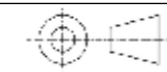
Universidad  
Industrial de  
Santander



ESCUELA DE INGENIERIA MECANICA

ESCALA:  
1:10

MECANISMO DE MOLIENDA,  
EXPLOSIONADO



DIBUJADO POR:  
NINY PINEDA Y FABIAN PINEDA

2024-08-16

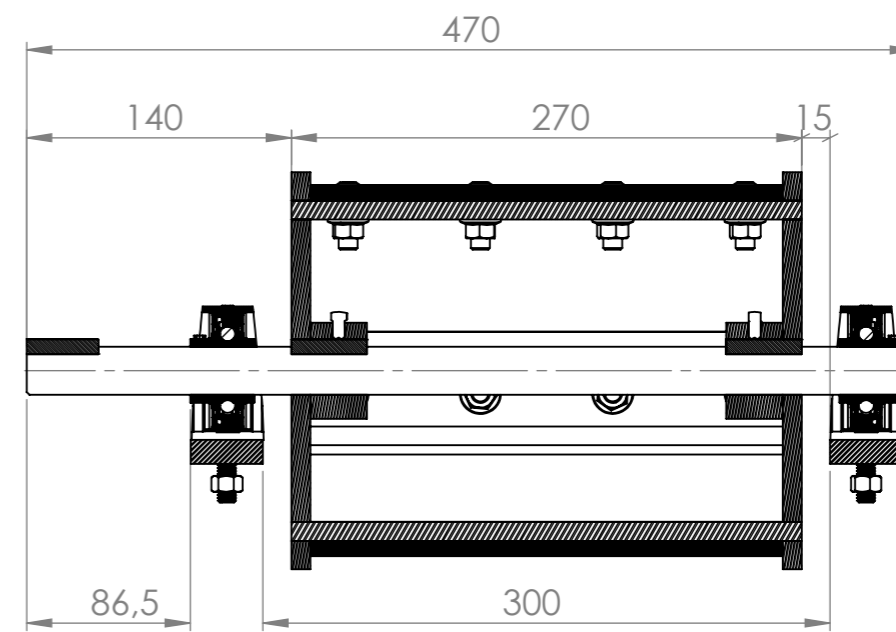
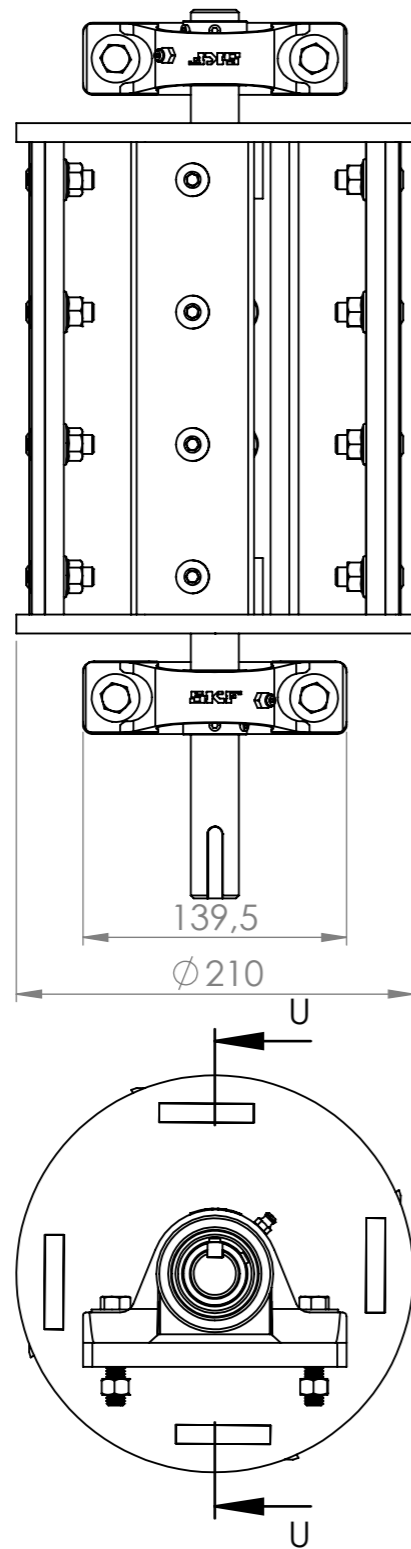
FORMATO  
A3

REVISADO POR:  
ISNARDO GONZALEZ

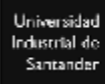

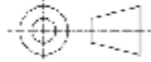
HOJA  
4/64

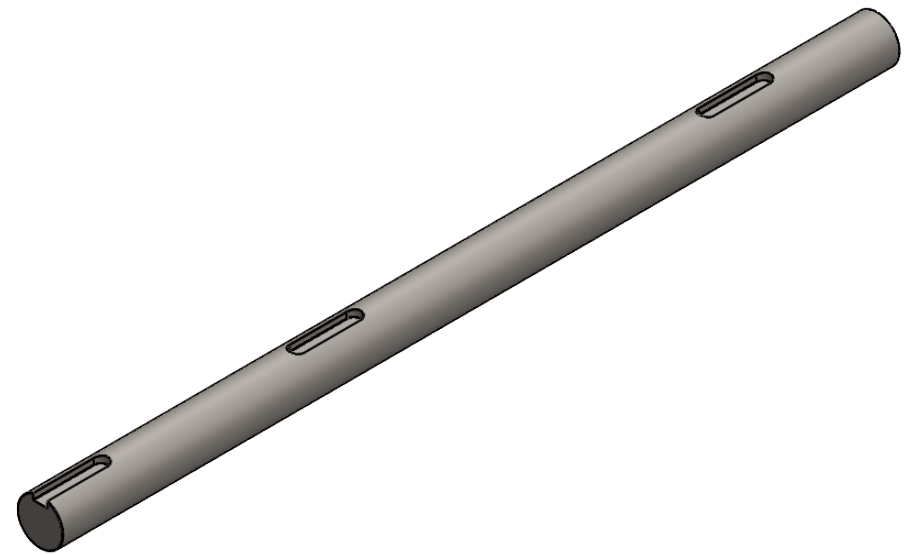
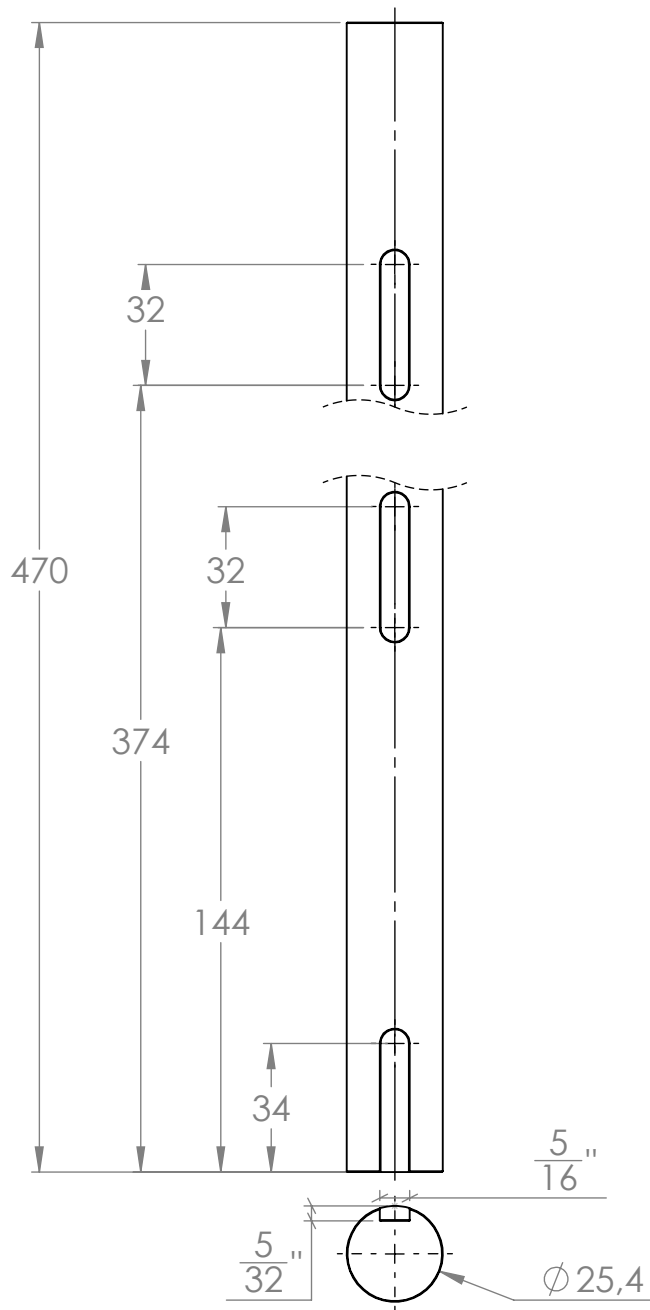
MEDIDAS EN:  
MILIMETROS

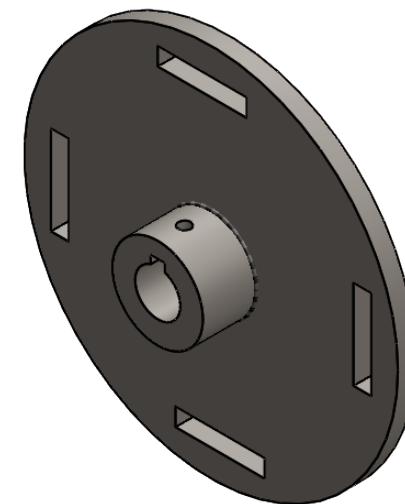
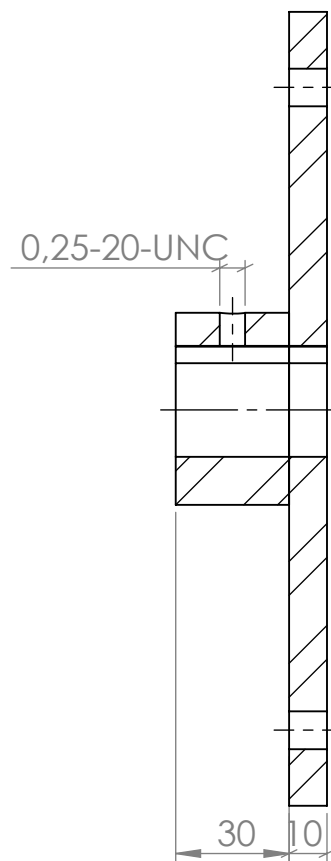
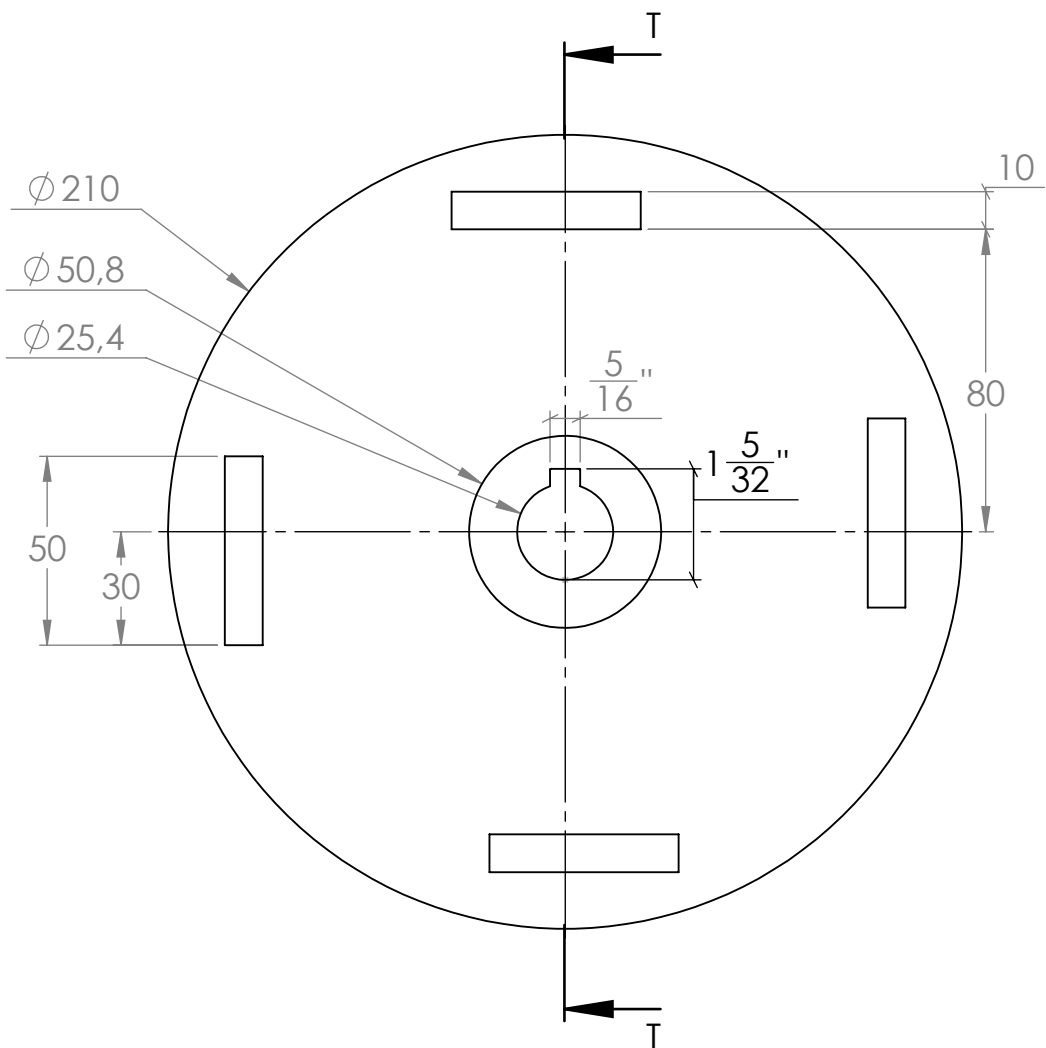
PL N°01-01-00

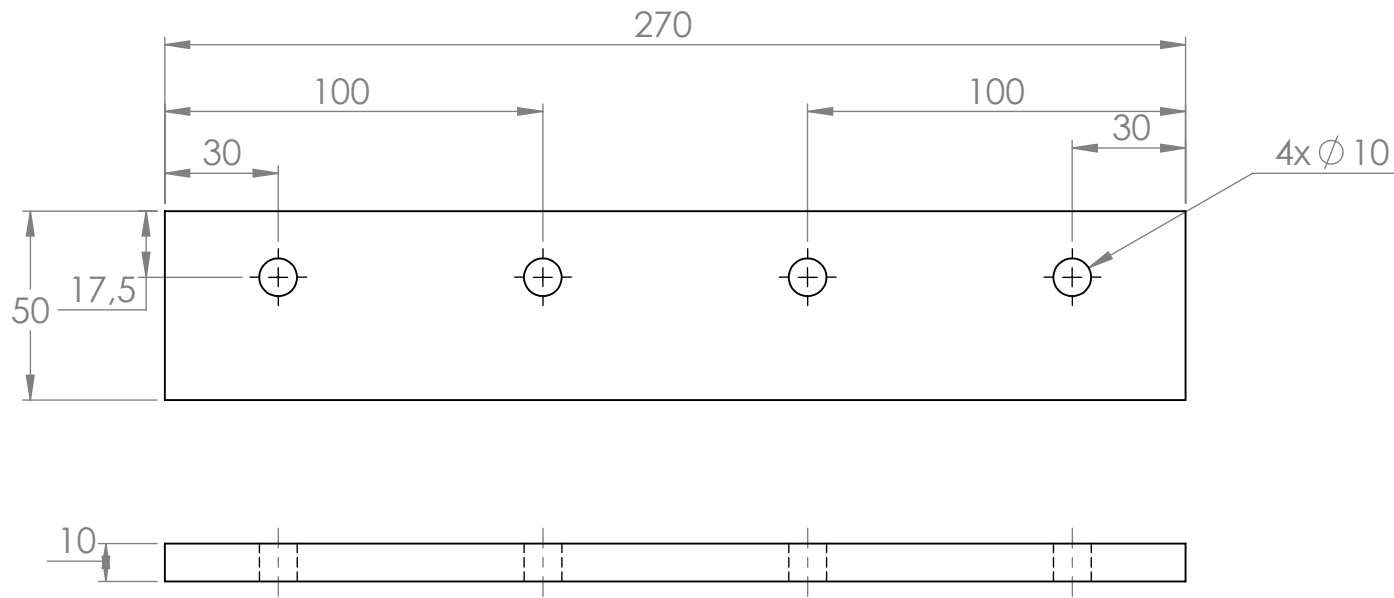
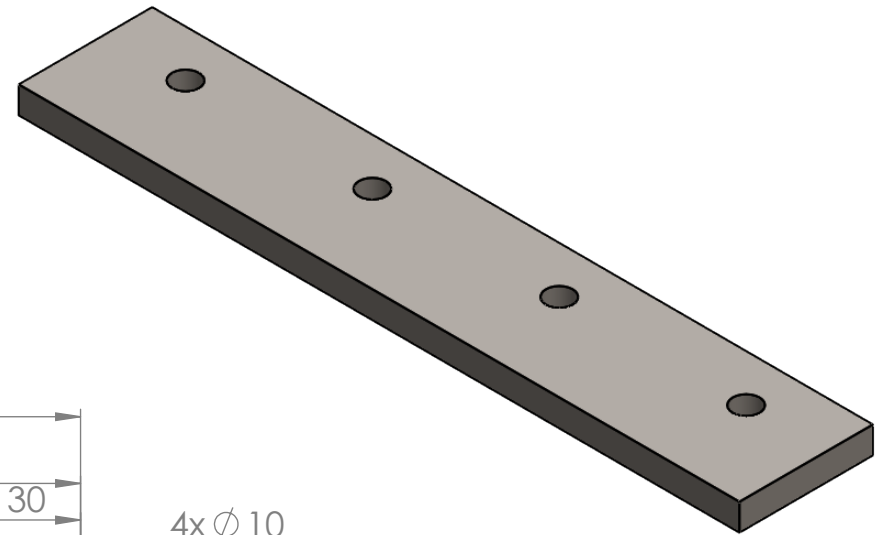


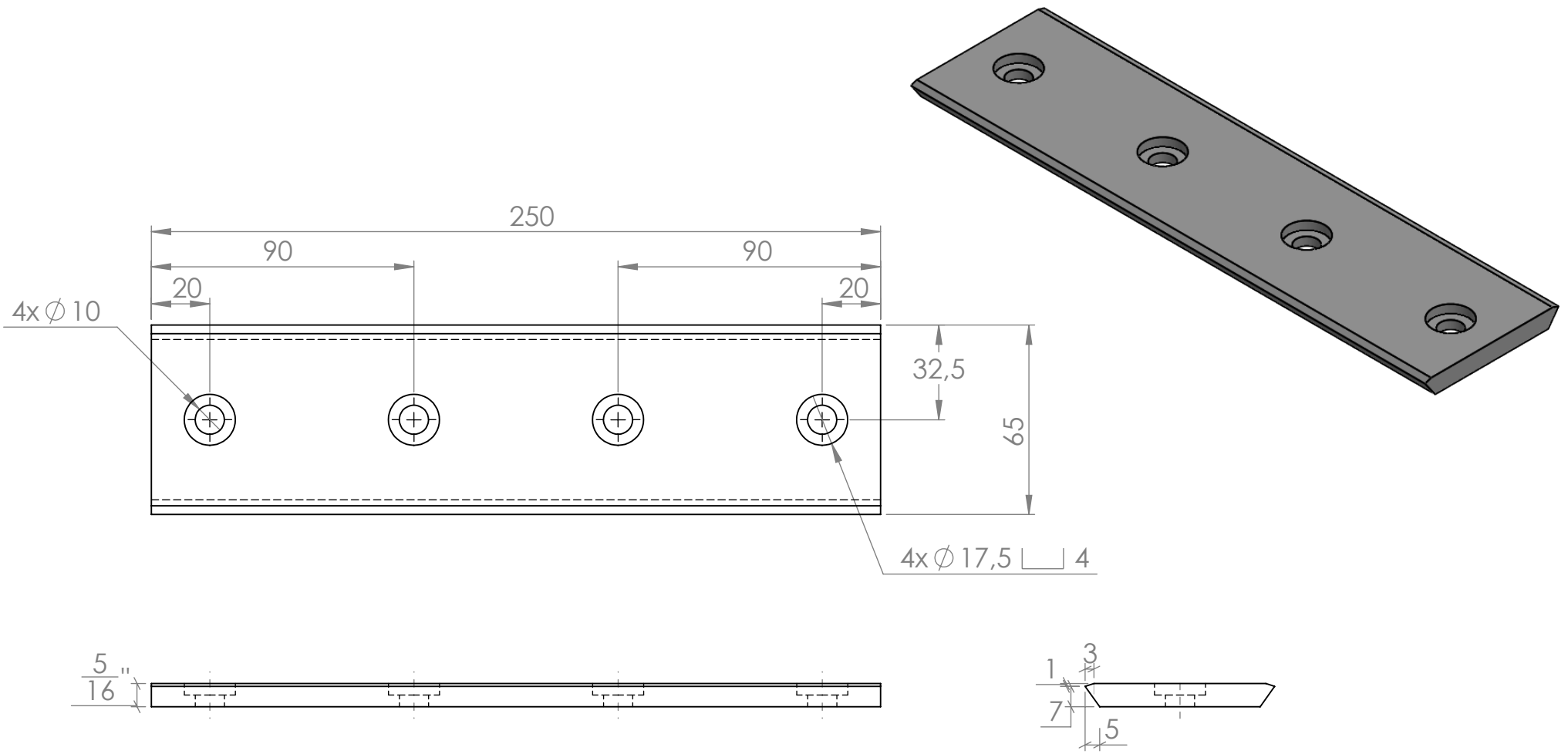
SECCIÓN U-U  
ESCALA 1 : 4

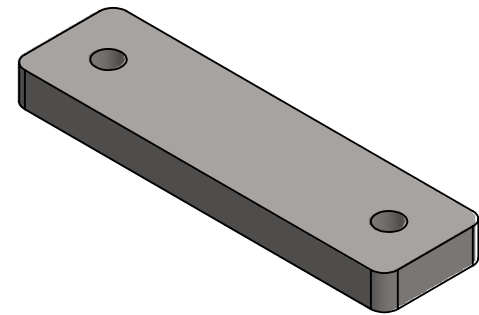
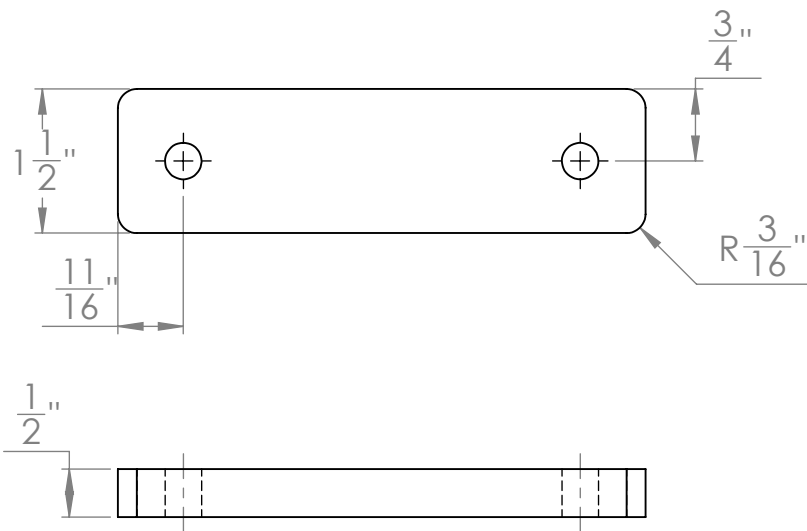
		<b>ESCUELA DE INGENIERIA MECANICA</b>	
<b>ESCALA:</b> 1:4	<b>MECANISMO DE MOLIENDA</b>		
	<b>DIBUJADO POR:</b> NINY PINEDA Y FABIAN PINEDA	<b>2024-08-16</b>	
<b>FORMATO</b> A3	<b>REVISADO POR:</b> ISNARDO GONZALEZ		<b>HOJA</b> 5/64
<b>MEDIDAS EN:</b> MILIMETROS			<b>PL N° 01-01-00</b>

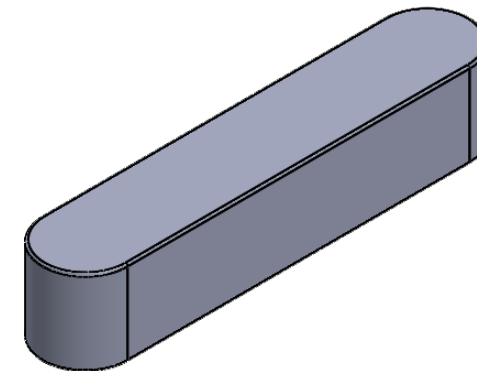
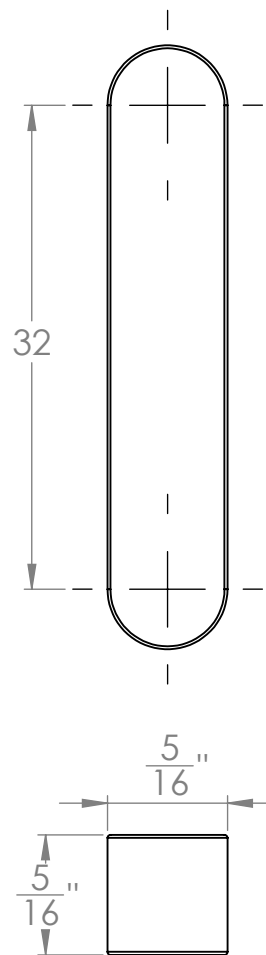


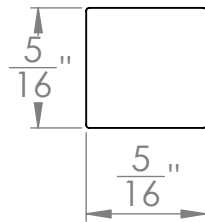
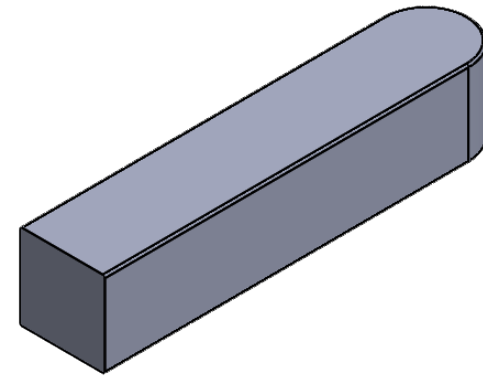
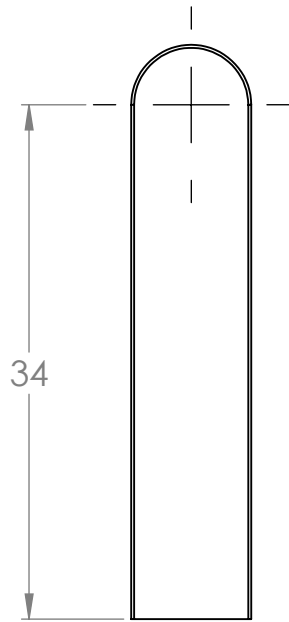


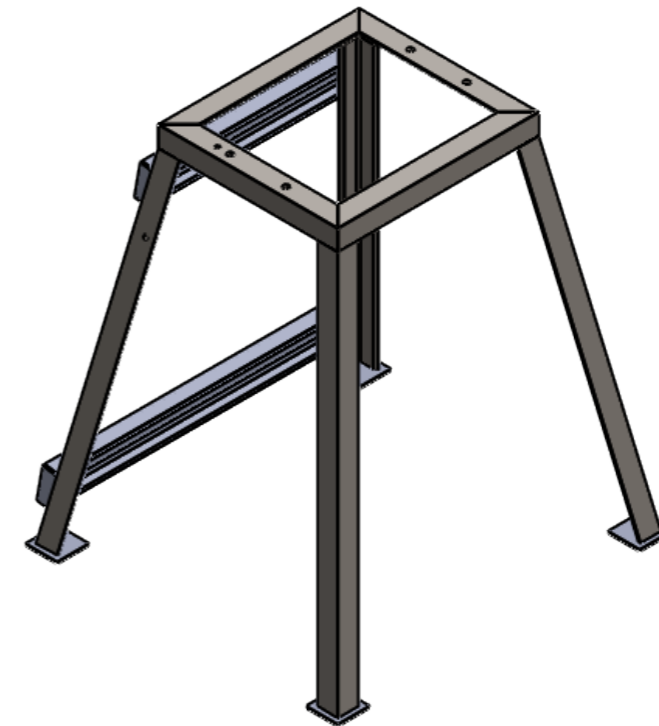
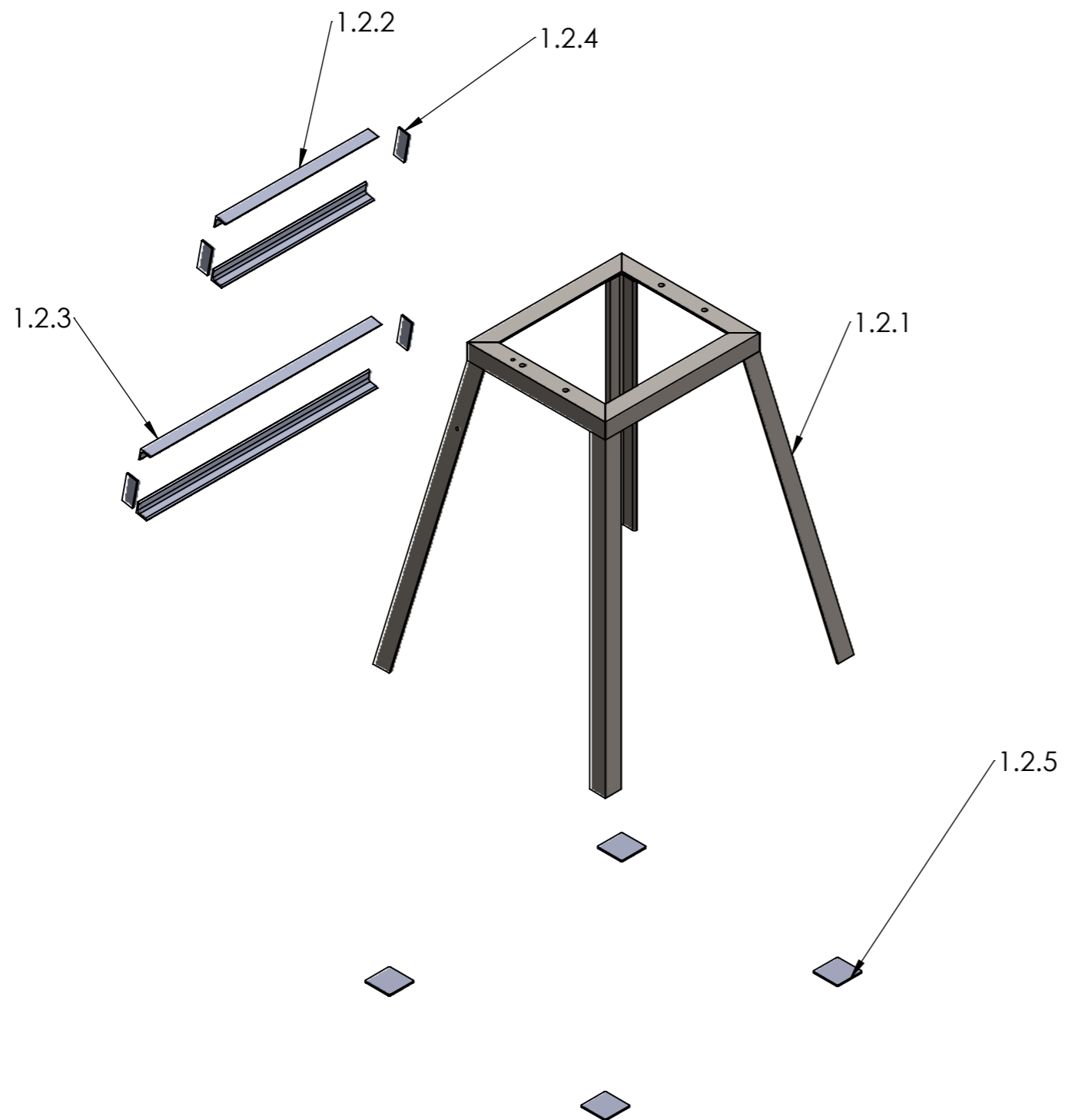




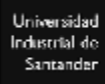

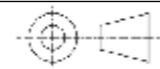


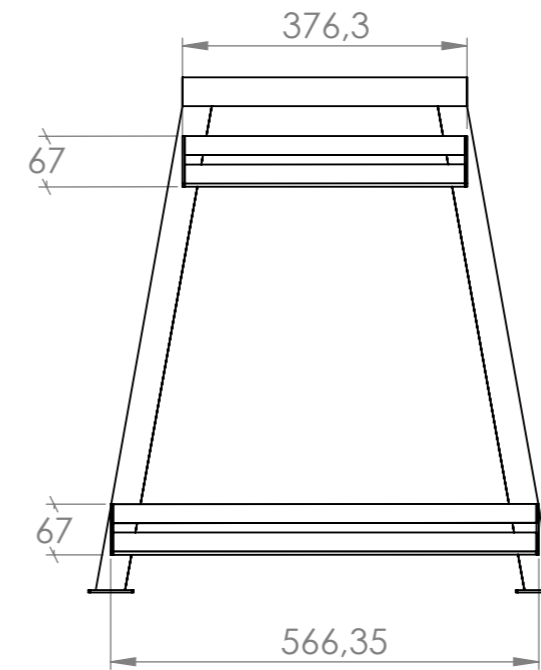
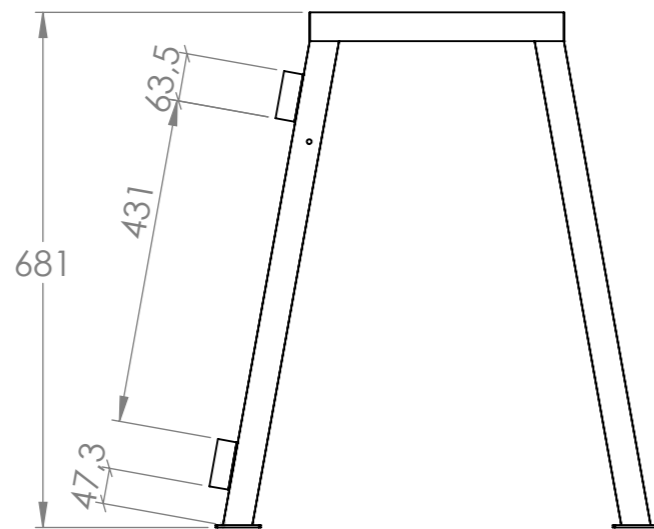
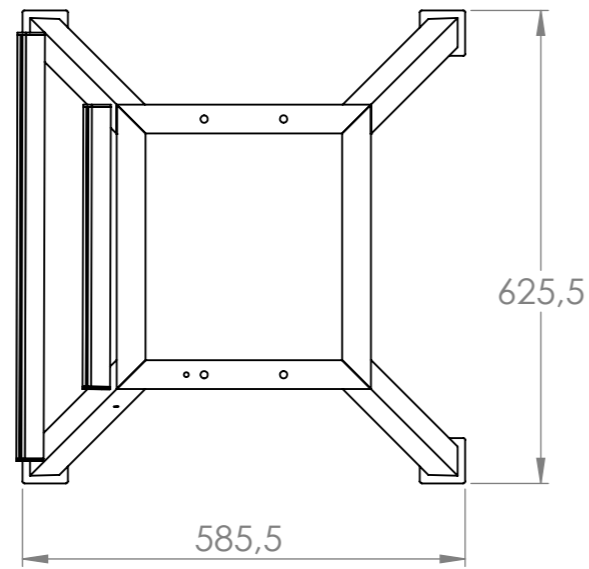






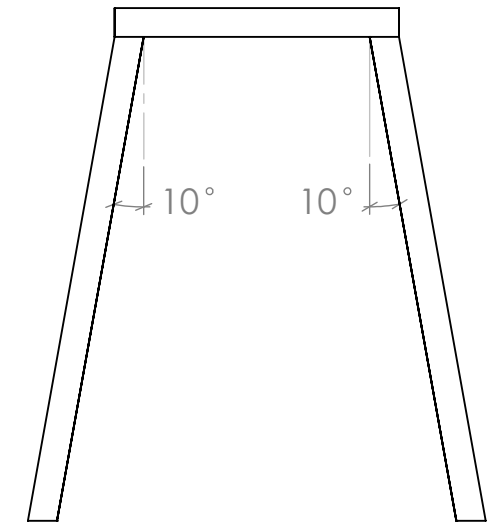
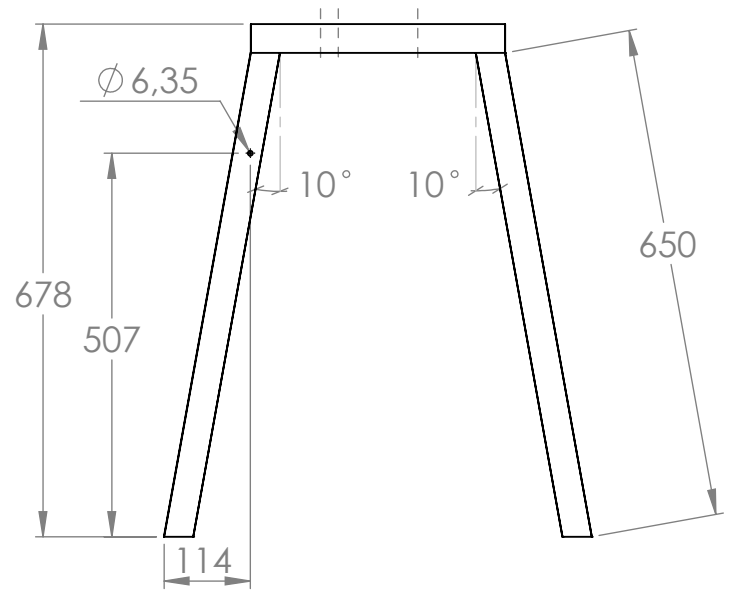
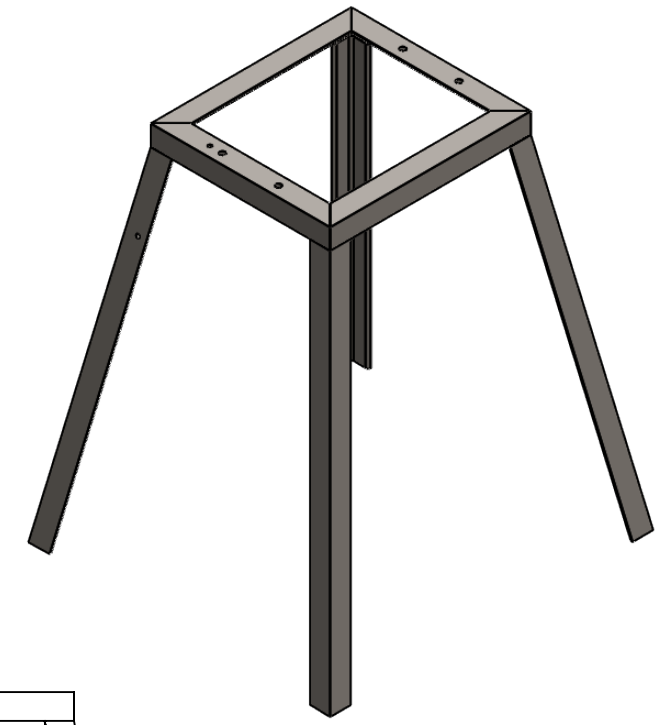
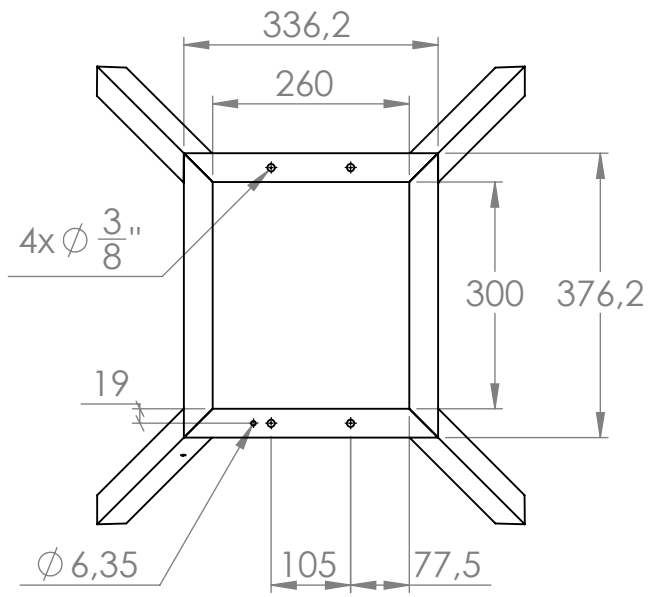




1.2.5	Lámina base 0.125	4	ACERO 1045
1.2.4	Lámina lateral 0.125	4	ACERO 1045
1.2.3	Ángulo inferior L1x1x0.125	2	ACERO ASTM A36
1.2.2	Ángulo superior L1x1x0.125	2	ACERO ASTM A36
1.2.1	Estructura ángulo L1.5x1.5x0.25	1	ACERO ASTM A36
N°	NOMBRE	CANT	MATERIAL

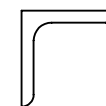
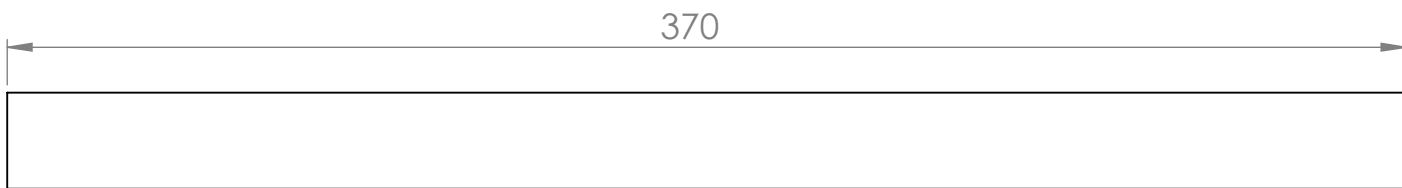
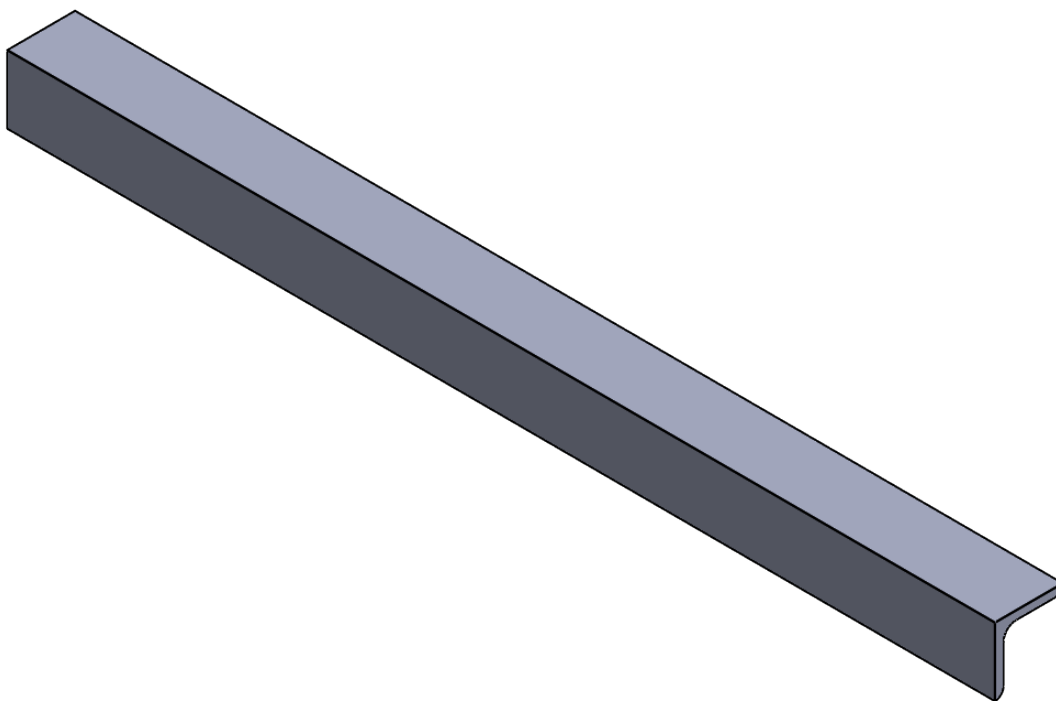
 	ESCUELA DE INGENIERIA MECANICA		
ESCALA: 1:10	BASTIDOR, EXPLOSIONADO		
	DIBUJADO POR: FABIAN PINEDA Y NINY PINEDA	2024-08-16	
FORMATO A3	REVISADO POR: ISNARDO GONZALEZ		HOJA 13/64
MEDIDAS EN: MILIMETROS			PL N°01.02.00





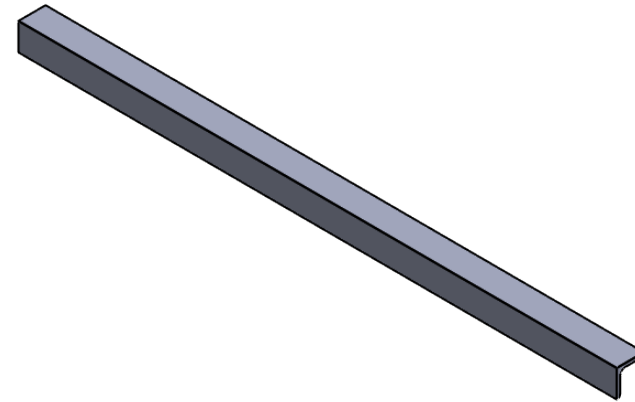
Universidad Industrial de Santander 	ESCUELA DE INGENIERIA MECANICA		
ESCALA: 1:10	BASTIDOR		
	DIBUJADO POR: NINY PINEDA Y FABIAN PINEDA	2024-08-16	
FORMATO A3	REVISADO POR: ISNARDO GONZALEZ		HOJA 14/64
MEDIDAS EN: MILIMETROS			PL N° 01-00-00

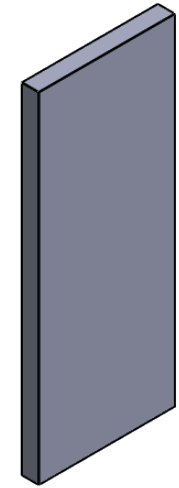
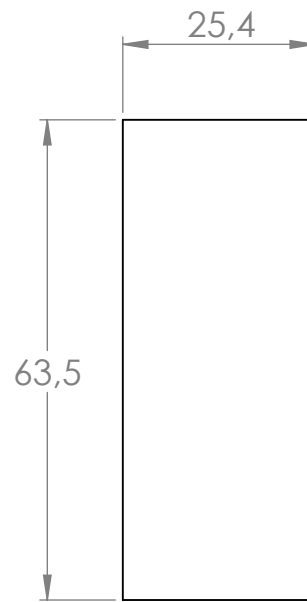
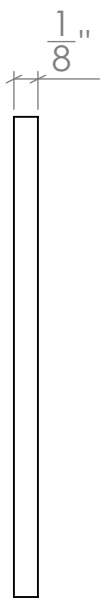


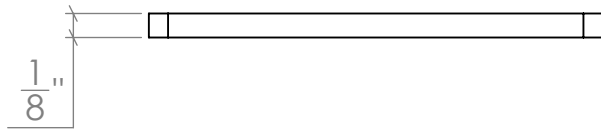
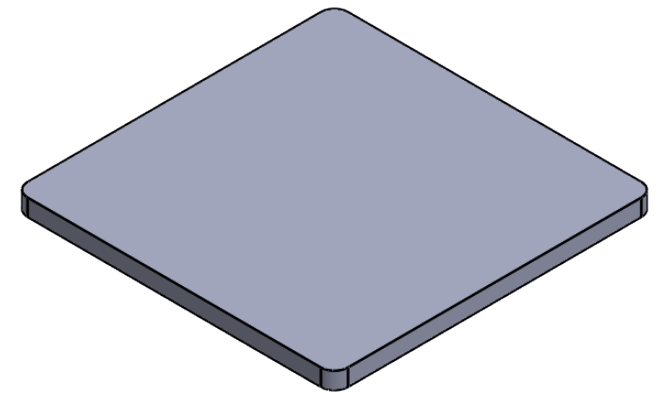
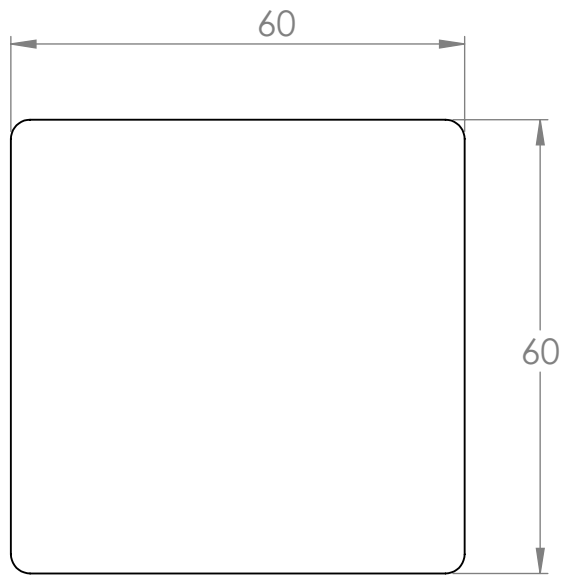
Universidad Industrial de Santander 	ESCUELA DE INGENIERIA MECANICA			ESTRUCTURA		PIEZA N° 1.2.1	MATERIAL: ACERO ASTM A36
	ESCALA: 1:10	MEDIDAS EN: MILIMETROS	FECHA: 16/08/24	DIBUJADO POR: NINY PINEDA Y FABIAN PINEDA		HOJA: 15/64	PL.# 01-02-01

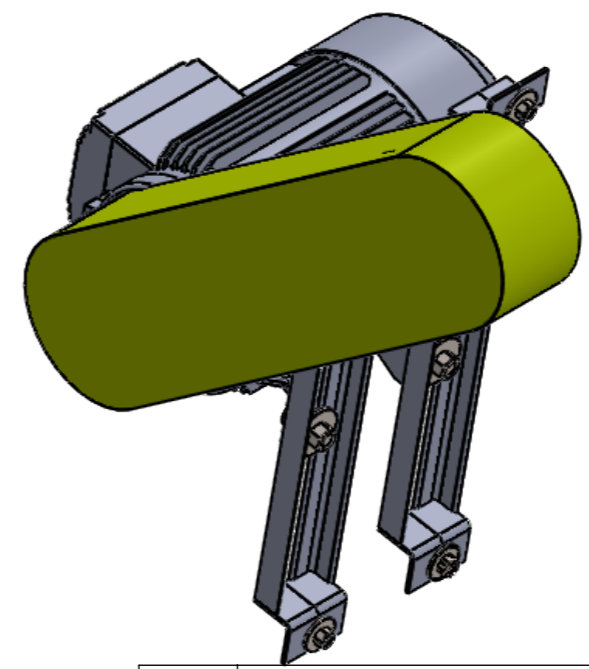
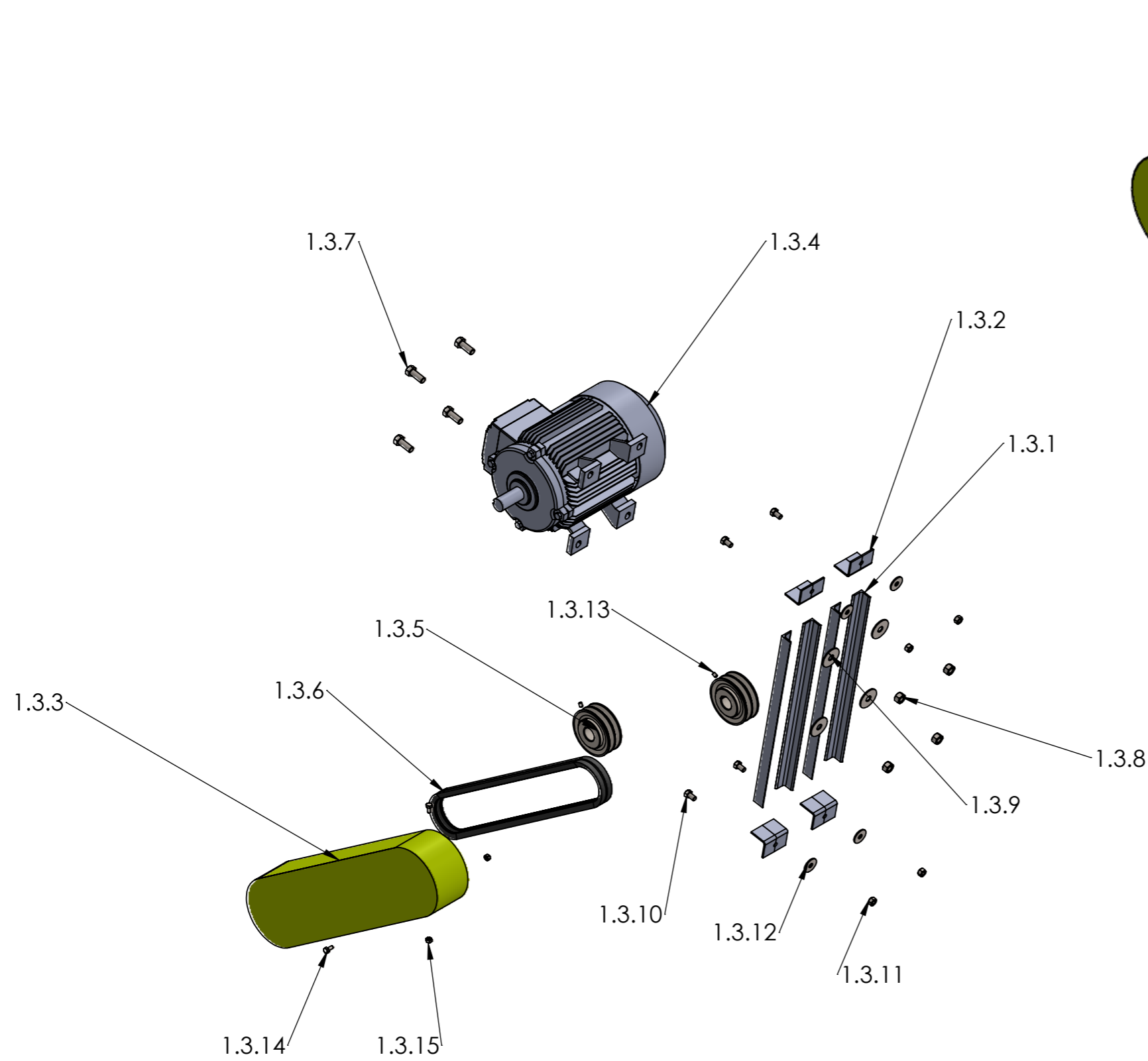


Universidad Industrial de Santander		ESCUELA DE INGENIERIA MECANICA			ANGULO SUPERIOR		PIEZA N° 1.2.2	MATERIAL: ACERO ASTM A36
		ESCALA: 1:2	MEDIDAS EN: MILIMETROS	FECHA: 16/08/24	DIBUJADO POR: FABIAN PINEDA		HOJA: 16/64	PL.# 01-02-02









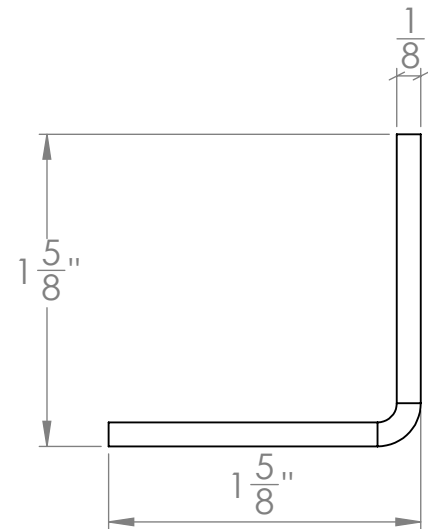
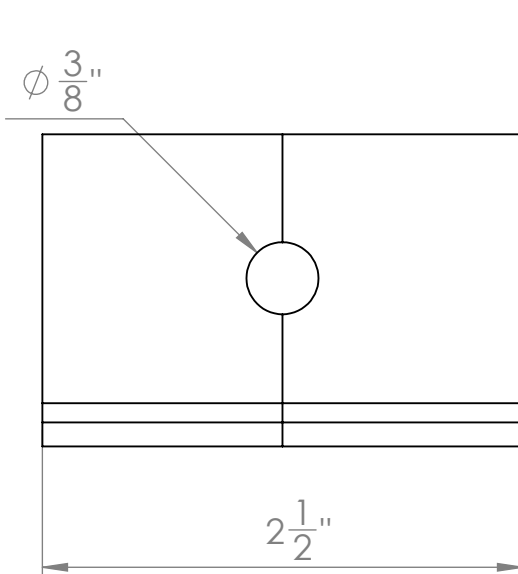
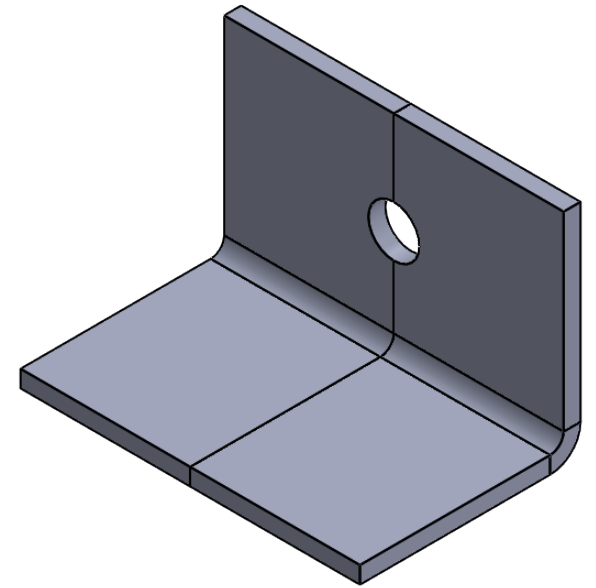


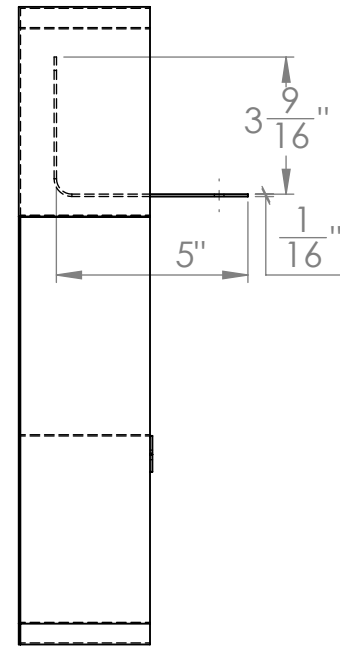
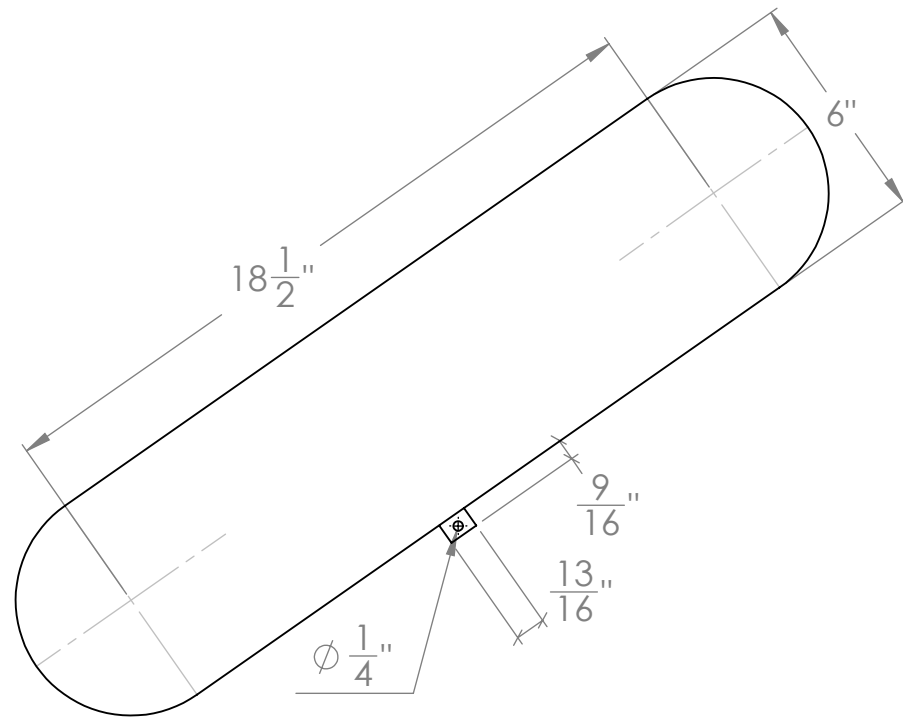
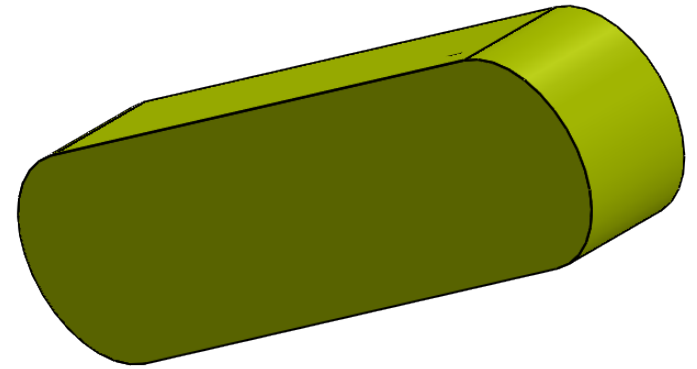
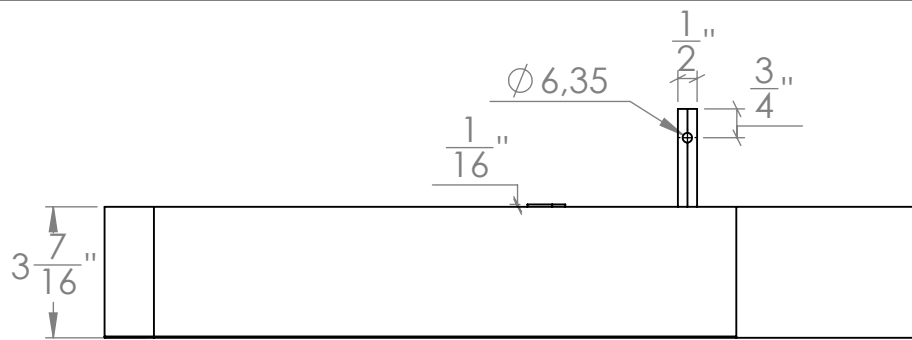
1.3.15	HNUT 0.25-20	2	ACERO AISI 304
1.3.14	HBOLT 0.25-20x0.5625x0.5625	2	ACERO AISI 304
1.3.13	Tornillo Prisionero SSCUPSKT 0.25-28x0.375	2	ACERO GRADO 8
1.3.12	WIDE FW-0.375	4	ACERO AISI 304
1.3.11	HNUT 0.375-24	4	ACERO AISI 304
1.3.10	HBOLT 0.375-24x0.625x0.625	4	ACERO AISI 304
1.3.9	WIDE FW-0.5	4	ACERO AISI 304
1.3.8	HNUT 0.25-20	4	ACERO AISI 304
1.3.7	HBOLT 0.5-20x1.25x1.25	4	ACERO AISI 304
1.3.6	Correa tipo A	2	CAUCHO REFORZADO
1.3.5	Polea doble garganta tipo A, $\phi$ 4"	2	ALUMINIO
1.3.4	Motor Weg 5 [HP]	1	
1.3.3	Guarda molino	1	LÁMINA GALVANIZADA CALIBRE 20
1.3.2	Base L	4	ACERO 1045
1.3.1	Ángulo vertical L1x1x0,125	4	ACERO ASTM A36
N°	NOMBRE	CANT	MATERIAL

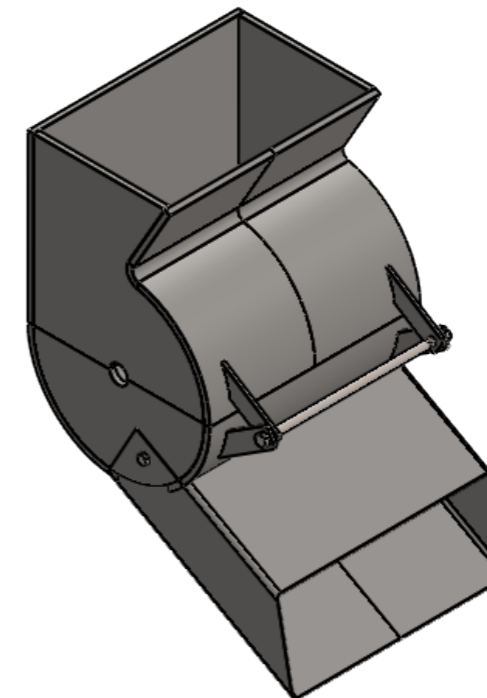
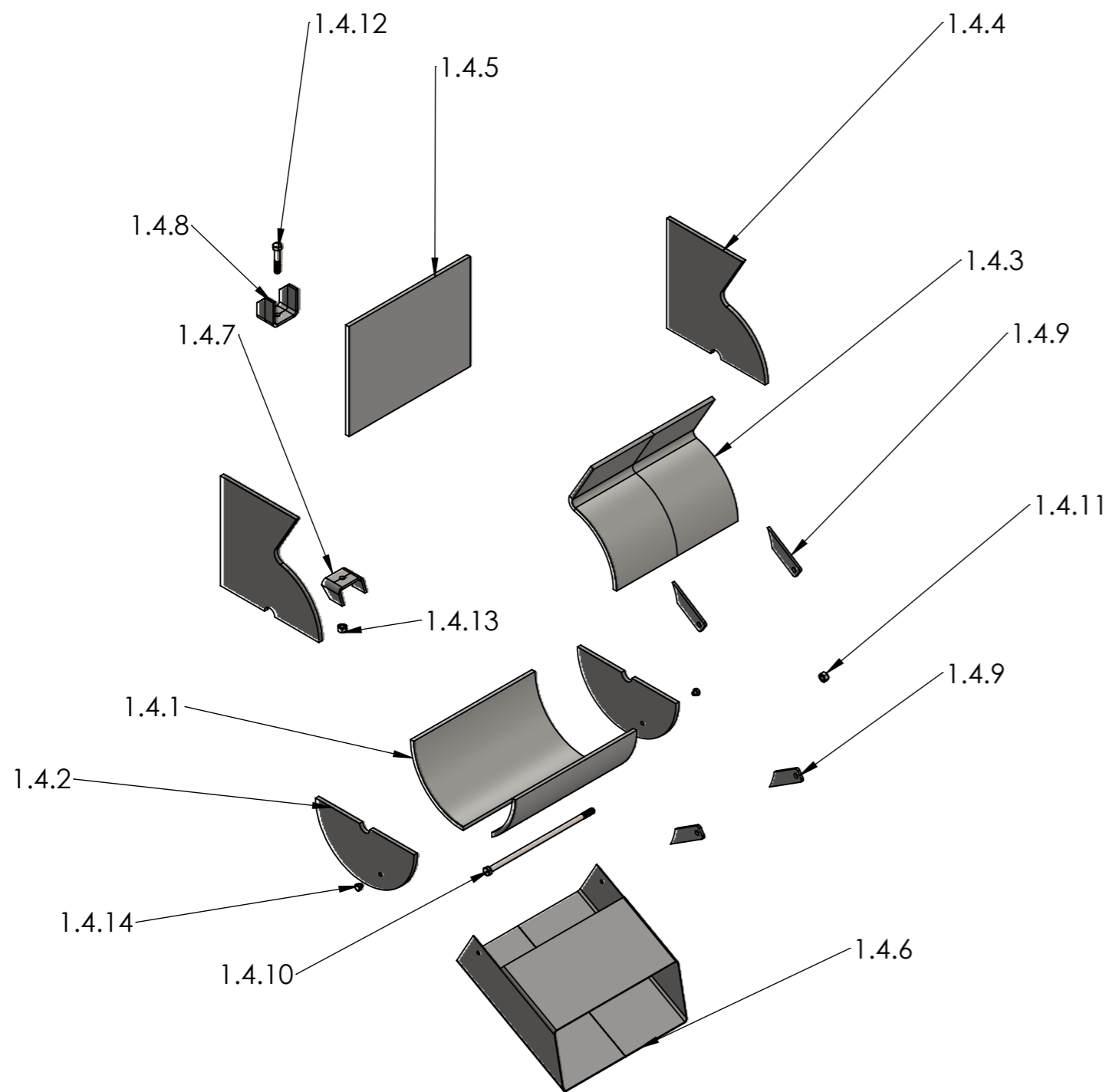
	<b>ESCUELA DE INGENIERIA MECANICA</b>		
<b>ESCALA:</b> 1:10	<b>MECANISMO DE POTENCIA,</b> EXPLOSIONADO		
	<b>DIBUJADO POR:</b> NINY PINEDA YFABIAN PINEDA	<b>2024-08-16</b>	
<b>FORMATO</b> A3	<b>REVISADO POR:</b> ISNARDO GONZALEZ		<b>HOJA</b> 20/64
<b>MEDIDAS EN:</b> MILIMETROS			<b>PL N°01.03-00</b>



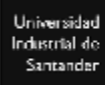

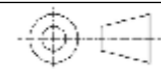
Universidad Industrial de Santander 	ESCUELA DE INGENIERIA MECANICA			ANGULO VERTICAL		PIEZA N° 1.3.1	MATERIAL: ACERO ASTM A36
	ESCALA: 1:5	MEDIDAS EN: MILIMETROS	FECHA: 16/08/24	DIBUJADO POR: NINY PINEDA Y FABIAN PINEDA		HOJA: 21/64	PL.# 01-03-01

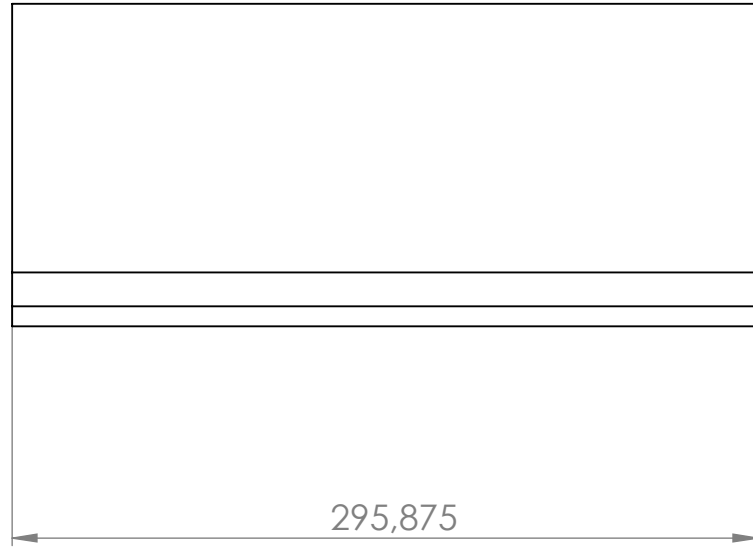
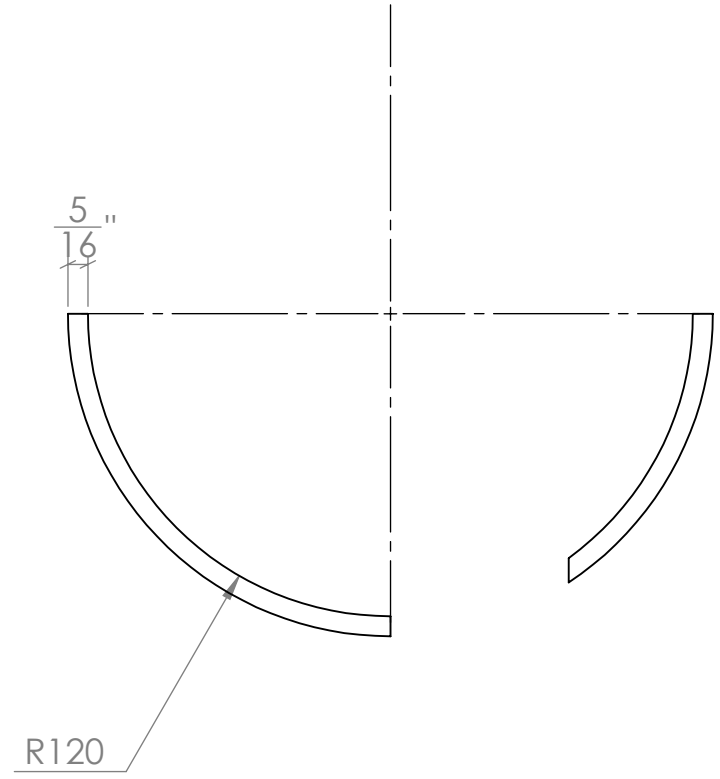
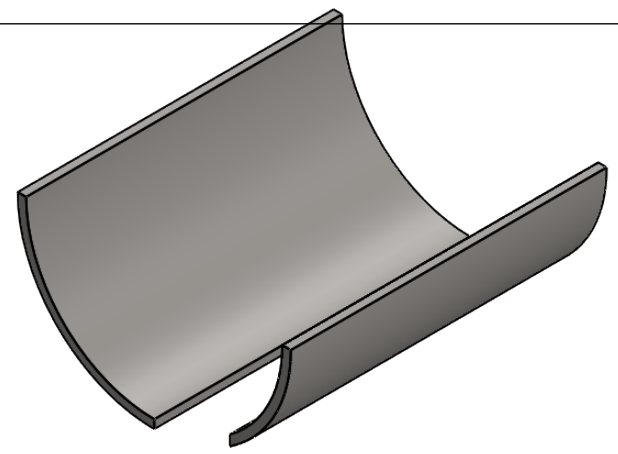





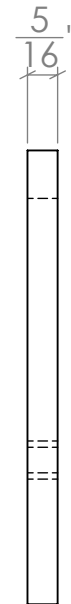
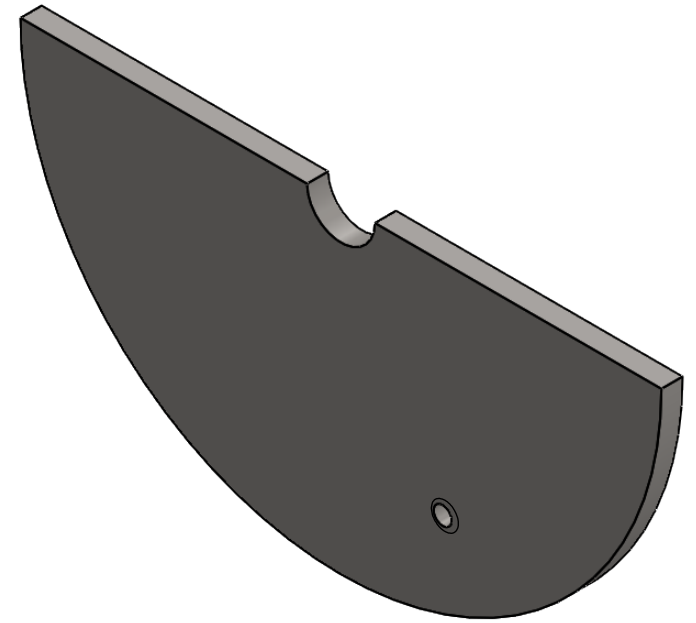
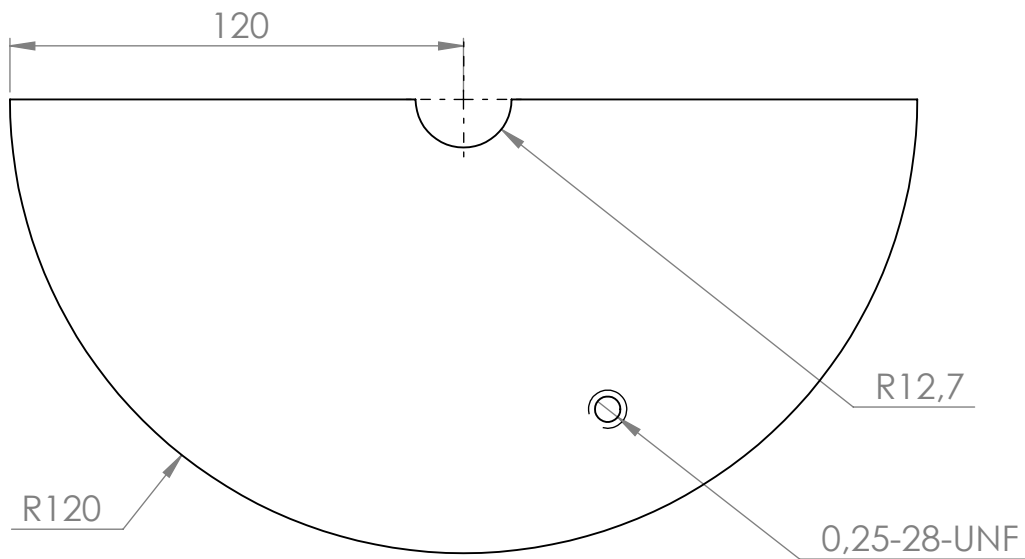


1.4.14	HBOLT 0.25-28x0.25x0.25	2	ACERO AISI 304
1.4.13	HNUT 0.375-16	1	ACERO AISI 304
1.4.12	HBOLT 0.375-16x10x1	1	ACERO AISI 304
1.4.11	HNUT 0.375-16	1	ACERO AISI 304
1.4.10	HBOLT 0.375-16x10x1	1	ACERO AISI 304
1.4.9	Soportes de abertura	4	ACERO AISI 304
1.4.8	Soporte U superior	1	ACERO AISI 304
1.4.7	Soporte U inferior	1	ACERO AISI 304
1.4.6	Lámina 6	1	ACERO AISI 304
1.4.5	Lámina 5	1	ACERO AISI 304
1.4.4	Lámina 4	2	ACERO AISI 304
1.4.3	Lámina 3	1	ACERO AISI 304
1.4.2	Lámina 2	2	ACERO AISI 304
1.4.1	Lámina 1	1	ACERO AISI 304
N°	NOMBRE	CANT	MATERIAL

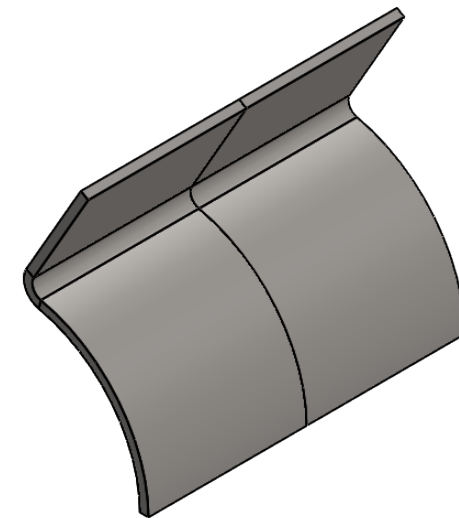
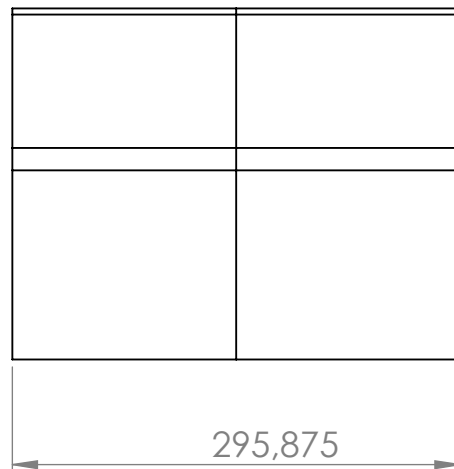
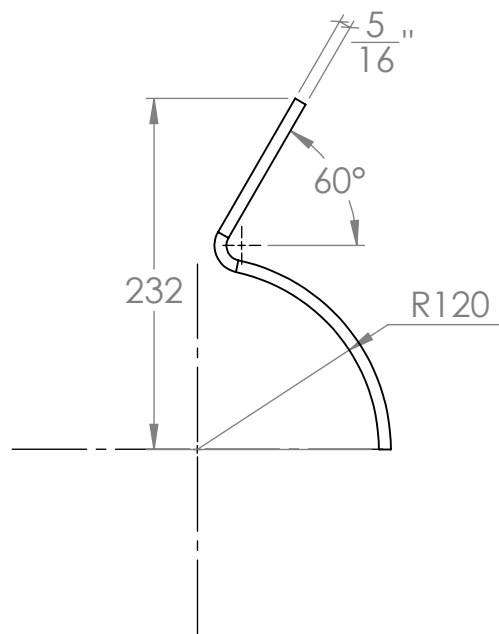
 	ESCUELA DE INGENIERIA MECANICA		
ESCALA: 1:10	CARCASA, EXPLOSIONADO		
	DIBUJADO POR: NINY PINEDA Y FABIAN PINEDA	2024-08-16	
FORMATO A3	REVISADO POR: ISNARDO GONZALEZ		HOJA 24/64
MEDIDAS EN: MILIMETROS			PL N°01.04.00



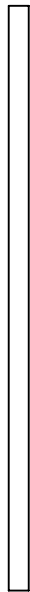
	ESCUELA DE INGENIERIA MECANICA			LAMINA 1		PIEZA N° 1.4.1	MATERIAL: AISI 304
	ESCALA: 1:3	MEDIDAS EN: MILIMETROS	FECHA: 16/08/24	DIBUJADO POR: NINY PINEDA Y FABIAN PINEDA		HOJA: 25/64	PL.# 01-04-01



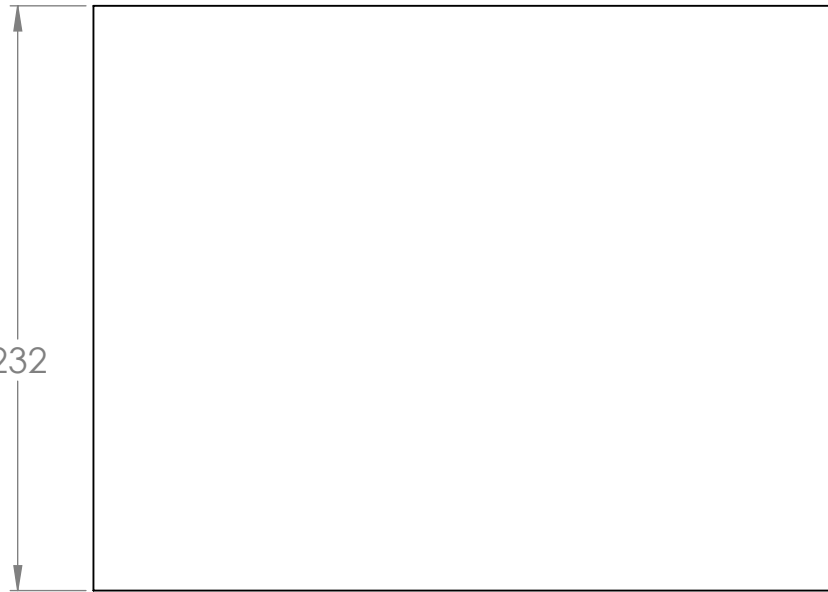
	ESCUELA DE INGENIERIA MECANICA			LAMINA 2		PIEZA N° 1.4.2	MATERIAL: AISI 304
	ESCALA: 1:2	MEDIDAS EN: MILIMENTROS	FECHA: 16/08/24	DIBUJADO POR: NINY PINEDA Y FABIAN PINEDA		HOJA: 26/64	PL.# 01-04-02



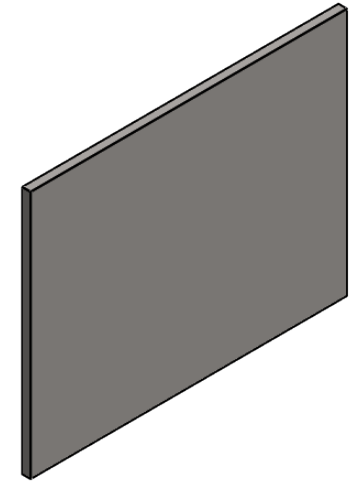
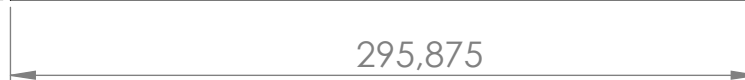
$\frac{5}{16}$ "

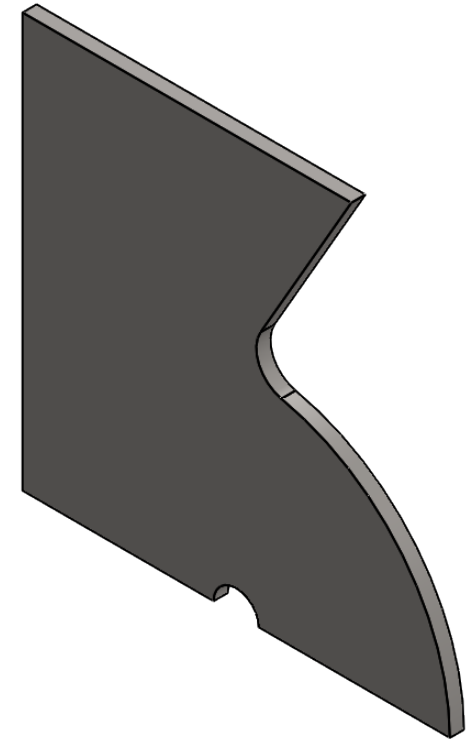
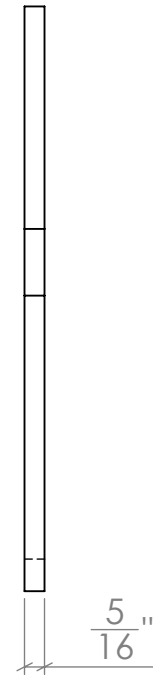
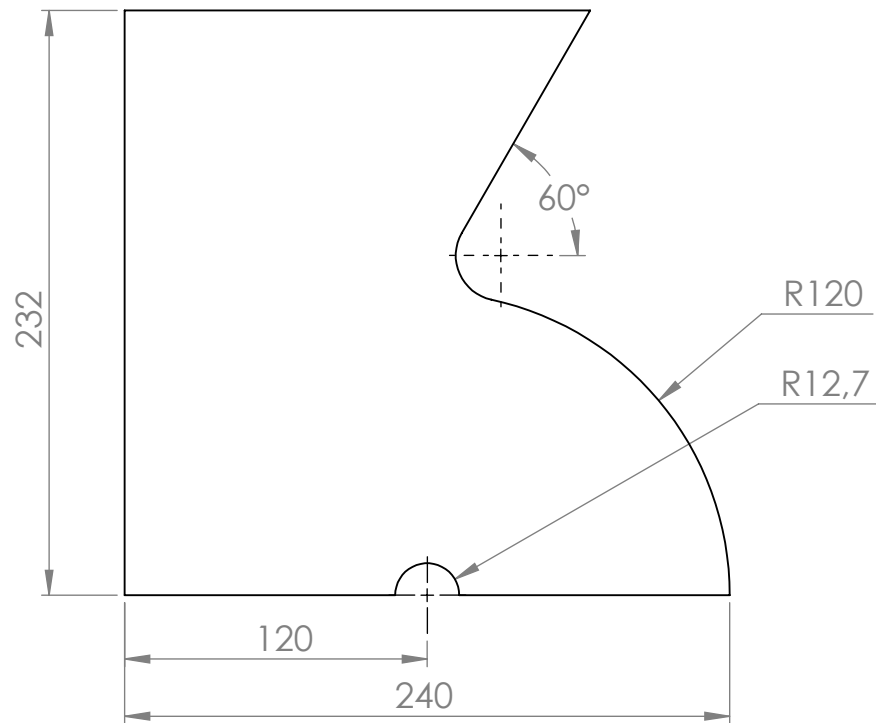


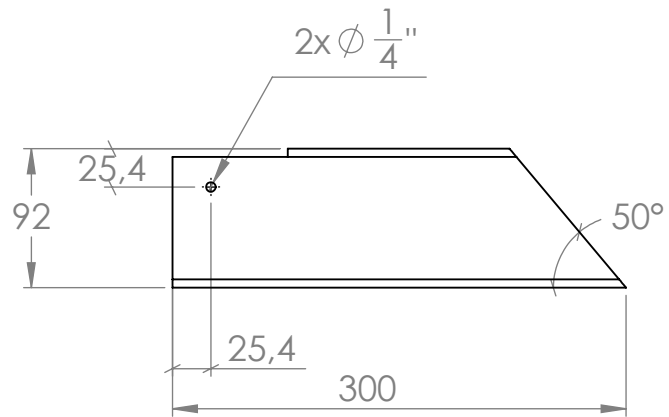
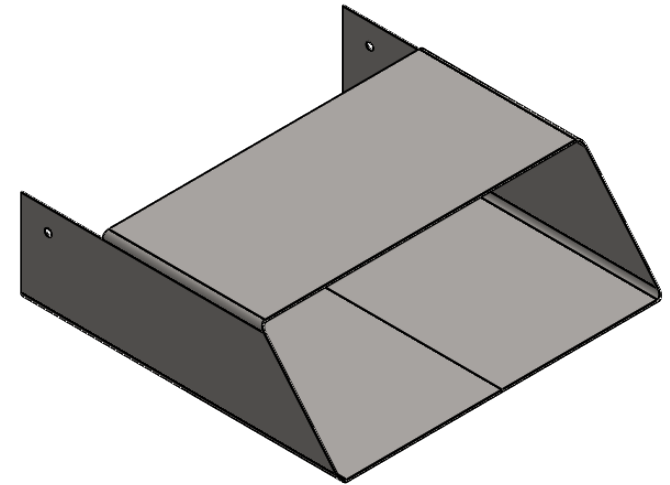
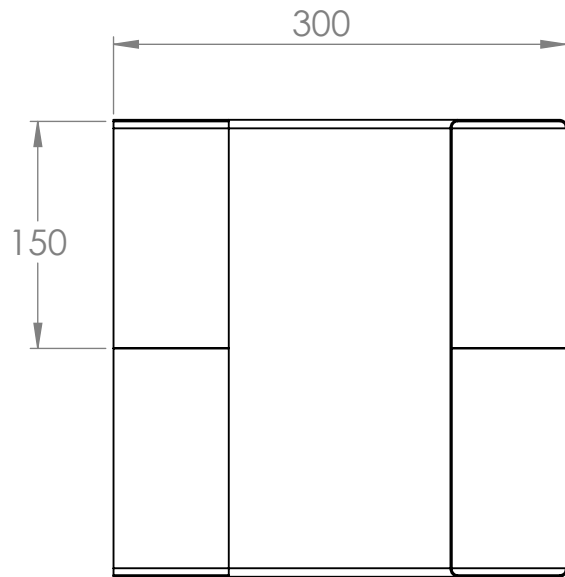
232



295,875







**NOTA:** Lámina calibre 18

